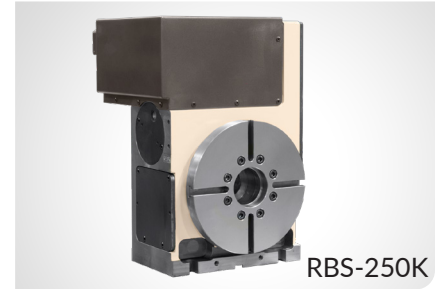


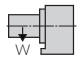
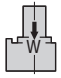
RBS-160K, 250K, 320K

PACKAGED WITH CONTROLLER FOR PLUG & PLAY OPERATION

A new line of high accuracy, high rigidity, energy saving and zero maintenance rotary tables from Tsudakoma. The RBS,K Series rotary tables are built using the new ball drive system featuring advantages like zero backlash, improved cycle times, energy conservation and a lifetime adjustment-free transmission system.



RBS-250K

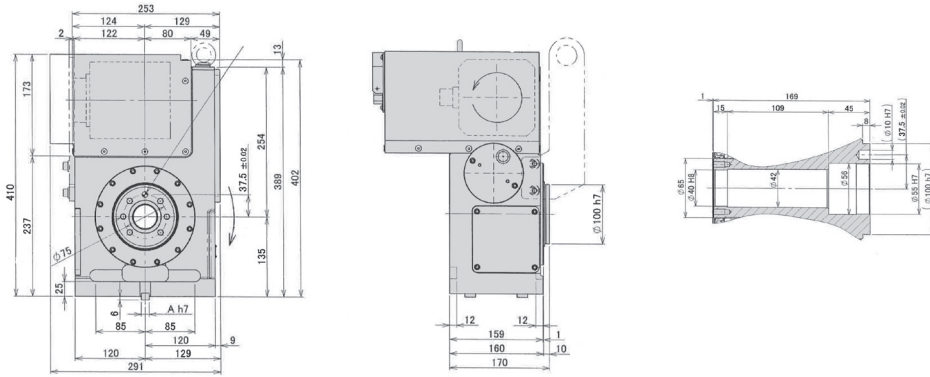
Table Model		RBS-160K	RBS-250K	RBS-320K
Spindle outer diameter	mm	100h7	140h7	180h7
Table diameter (optional)	mm	(160, 200)	250	320
Center height	mm	160	210	255
Center bore	Nose Diameter	55H7	80H7	115H7
	Thru Diameter	40	50	85
Guide block width		14h7	18h7	18h7
Servo motor (For Fanuc)*		Alpha 4i	Alpha 8i	Alpha 12i
Maximum Motor Speed		5,000	4,000	4,000
Speed reduction ratio		1/36	1/36	1/36
Maximum table speed		rpm 138.9	111.1	111.1
Clamp system		Pneumatic	Pneumatic	Pneumatic
Holding torque @72psi	Nm (ft. lbs.)	700 (516)	1480 (1076)	2580 (1901)
Indexing accuracy	arc sec.	±7.5	±7.5	±7.5
Net Weight	kg (lbs.)	55 (121.2)	100 (220)	200 (440)
Allowable work weight [with tailstock]	 kg (lbs)	100 (200) [200 (440)]	125 (275) [250 (550)]	175 (385) [350 (770)]
	 kg (lbs)	200 (440)	250 (550)	350 (770)

*Other motors & rpm available • Dimensions = mm
Specifications subject to change without notice

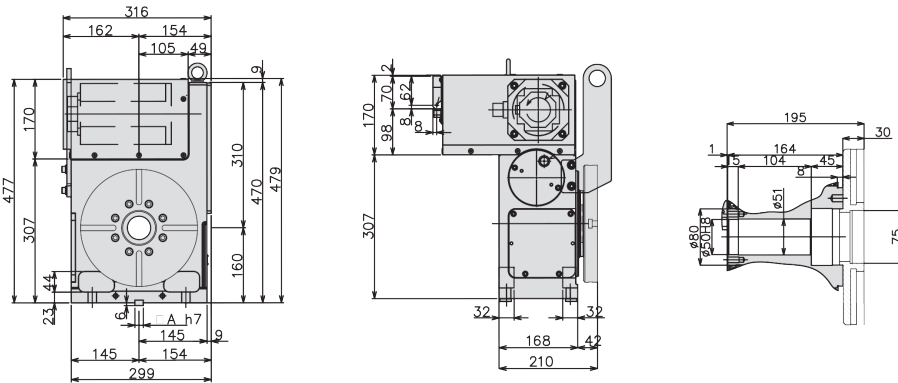
Dimensions

Drawings not to scale • Dimensions = mm

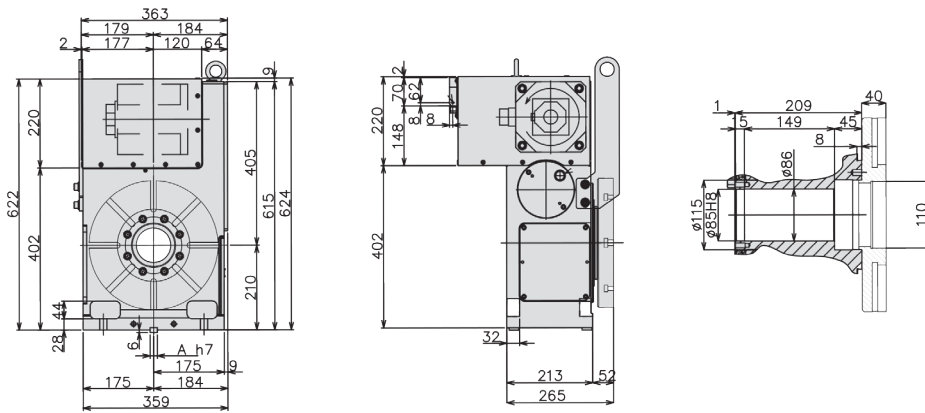
RBS-160K



RBS-250K



RBS-320K



The dimensions above are for tables with a FANUC servo motor. Other motors available (dimensions may increase).

Options & Accessories

TPC NC Controller	p.62
Chucks	p.74
Tailstock	p.75
Support Spindle	p.77
Face Plate	p.77
Encoder / Scale	p.78
Pull Stud Device	p.79
Rotary Joint	p.79
Booster	p.80
PVC or Steel Cables	p.81