

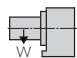
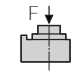
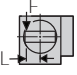
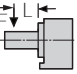
RNCK-631, 631-BB

POWERFUL HYDRAULIC CLAMPING

The RNCK-Series rotary tables have been designed for use on horizontal machining centers. These tables are typically pallet mounted for use in high production machining environments.



RNCK-631

Table Model		RNCK-631	RNCK-631-BB
Table diameter	mm	630	630
Center height	mm	400	400
Center bore	Nose Diameter	mm	60H6
	Thru Diameter	mm	60
Table T-slot width		18H7	18H7
Guide block width		18h7	18h7
Servo motor (Fanuc)*		Alpha 12i	Alpha 12i
Maximum motor speed	rpm	4,000	4,000
Speed reduction ratio		1/180	1/180
Maximum table speed	rpm	22.2	22.2
Inertia converted into motor shaft	$\times 10^{-3}\text{kg}\cdot\text{m}^2$	5.55	5.55
Clamp system**		Hydraulic	
Clamp torque @500psi	Nm (ft. lbs.)	4,410 (3,250)	4,410 (3,250)
Indexing accuracy		arc sec.	± 7.5
Net Weight		kg (lbs.)	800 (1,760)
Allowable wheel torque		Nm (ft. lbs.)	4,116 (3,033)
Allowable work inertia		kg·m ²	39.7
Allowable work weight	 kg (lbs) [w/ tailstock]	400 (880) [800 (1,760)]	400 (880) [800 (1,760)]
Allowable load when table clamped	 N (lbf)	49,000 (10,976)	49,000 (10,976)
	 Nm (ft. lbs.)	4,410 (3,250)	4,410 (3,250)
	 Nm (ft. lbs.)	7,840 (5,778)	7,840 (5,778)

* Other motors & RPM available

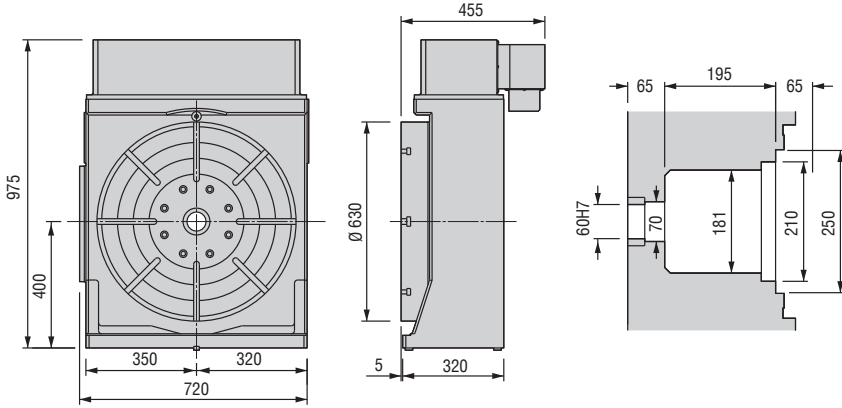
** Booster optional

Specifications subject to change without notice

Dimensions

Drawings not to scale • Dimensions = mm

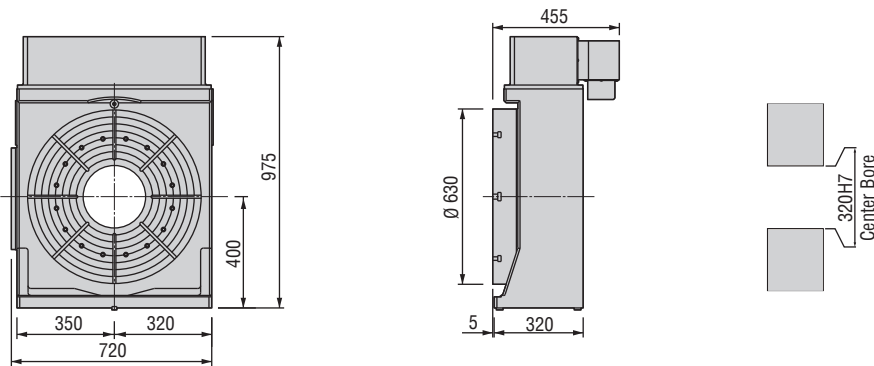
RNCK-631



RNCK-631
Optional Swivel Box



RNCK-631-BB

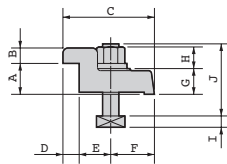


RNCK-631-BB

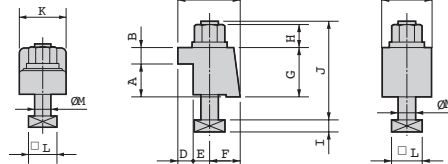


The dimensions above are for tables with a FANUC servo motor. Other motors available (dimensions may increase).

Type I



Type II



Options & Accessories

TPC NC Controller	p.62
Chucks	p.74
Tailstock	p.75
Support Spindle	p.77
Face Plate	p.77
Encoder / Scale	p.78
Pull Stud Device	p.79
Rotary Joint	p.79
Booster	p.80
PVC or Steel Cables	p.81

Clamping Block and Bolt

Dimensions = mm

	Type	Q'ty	T-Slot Width	A	B	C	D	E	F	G	H	I	J	K	L	M
RNCK-631	II	4	18	40	18	63	18	15	30	58	21	11	105	60	28	16
RNCK-631-BB	II	4	18	40	18	63	18	15	30	58	21	11	105	60	28	16

Note: When using a machine with a T-slot pitch other than the above, use suitable clamping blocks and bolts that are available on the market, or order custom-made ones from KOMA (opt.)