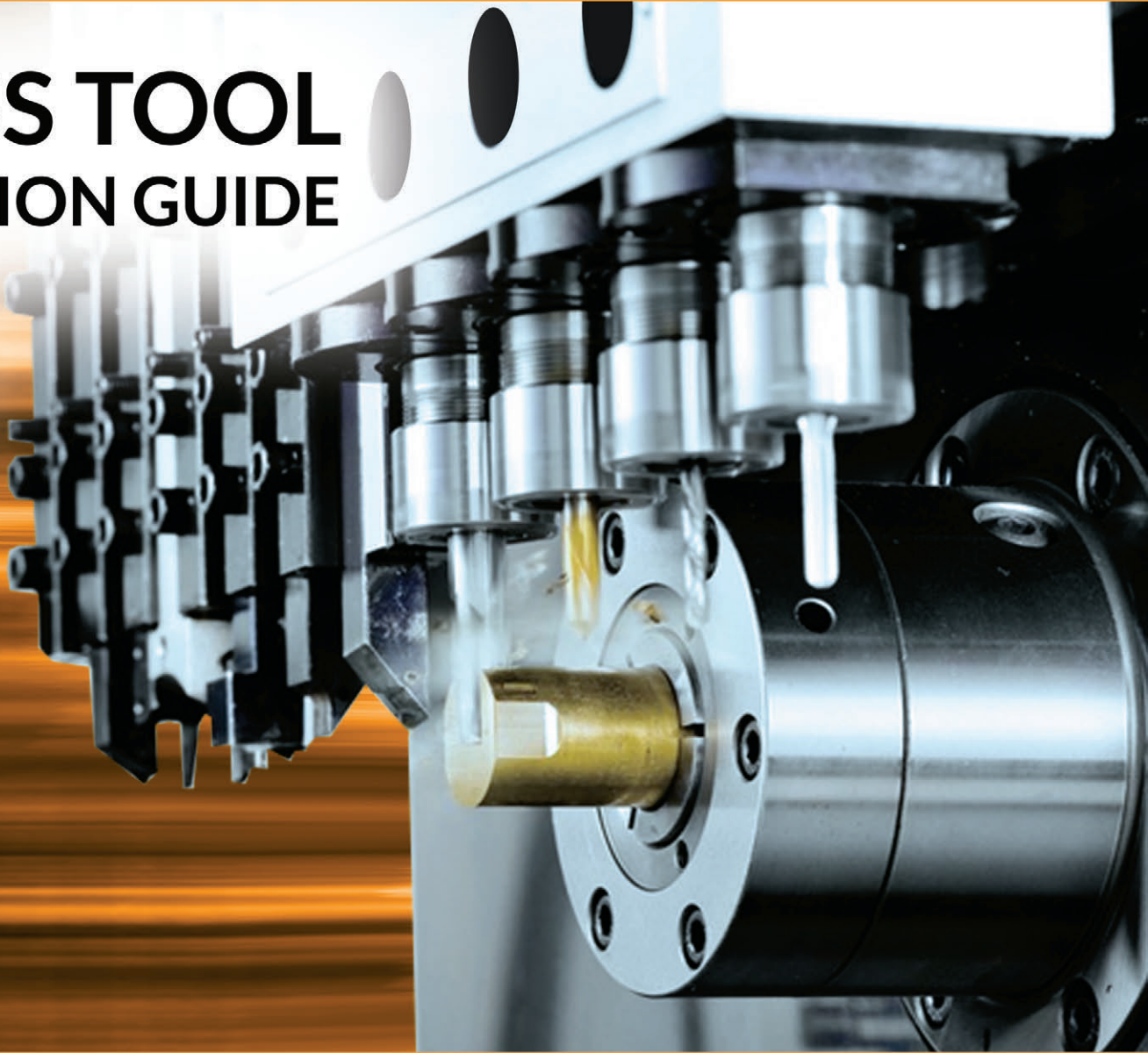


# KOMA

## SWISS TOOL SELECTION GUIDE



**NEXTURN**  
SWISS TURN LEADER

# ABOUT

## KOMA PRECISION

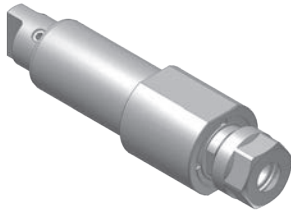
For over thirty years Koma Precision has been the foremost source for the finest the world has to offer in machine tool Productivity Innovation.

With over 30,000 rotary table installations, Koma is the largest distributor of Tsudakoma NC rotary tables and indexers in the world. With over 12,000 angle heads and live tools installed, Koma is the world's largest supplier for Alberti - the originator and the foremost innovator of productivity tooling.



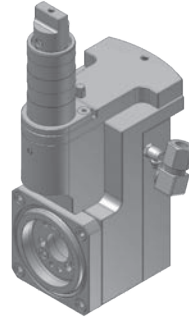
# NEXTURN SWISS TOOLING

## SA20D/SA32D TOOLING FOR GANG TOOL POST



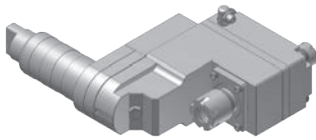
**NTA246100**  
Cross drilling/milling unit

RATIO 1 : 1  
RPM(MAX) 6000  
TOOL CLAMPING ER16A



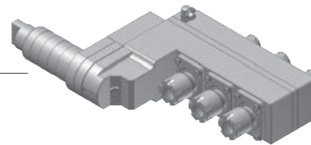
**NTA260100**  
Thread whirling unit

RATIO 1 : 1  
RPM(MAX) 6000  
THREAD(MAX) M12  
HELIX ANGLE  $\pm 20^\circ$



**NTA566100**  
1 spindle drilling/milling unit

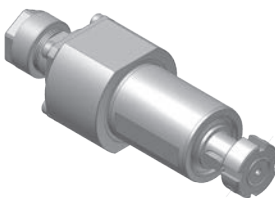
RATIO 1 : 1  
RPM(MAX) 6000  
TOOL CLAMPING  
Front side : ER16  
Back side : ER11M



**NTA566300**  
3 spindle drilling/milling unit

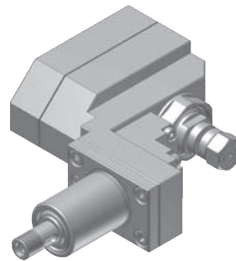
RATIO 1 : 1  
RPM(MAX) 6000  
TOOL CLAMPING  
Front side : ER16M  
Back side : ER11M

## SA20D TOOLING FOR BACK TOOL POST



**NTA741100**  
Drilling/milling unit

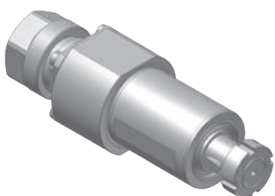
RATIO 1 : 1  
RPM(MAX) 8000  
TOOL CLAMPING ER11A



**NTA730100-20**  
Slotting unit

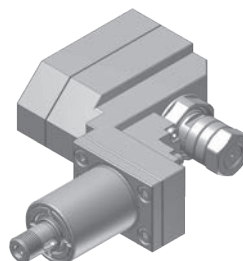
RATIO 1 : 0.55  
RPM(MAX) 4000  
SAW OD(MAX)  $\varnothing 50$  mm  
SAW ARBOR SHANK  $\varnothing 8.0$  mm

## SA32D TOOLING FOR BACK TOOL POST



**NTA746100**  
Drilling/milling unit

RATIO 1 : 1  
RPM(MAX) 8000  
TOOL CLAMPING ER16A



**NTA730100-32**  
Slotting unit

RATIO 1 : 0.55  
RPM(MAX) 4000  
SAW OD(MAX)  $\varnothing 50$   
SAW ARBOR SHANK  $\varnothing 12.0$   $12.7$   $13.0$

Tel: 1.800.249.5662  
Fax: 860.623.4132

info@komaprecision.com  
www.komaprecision.com

20 Thompson Road  
East Windsor, CT 06088

