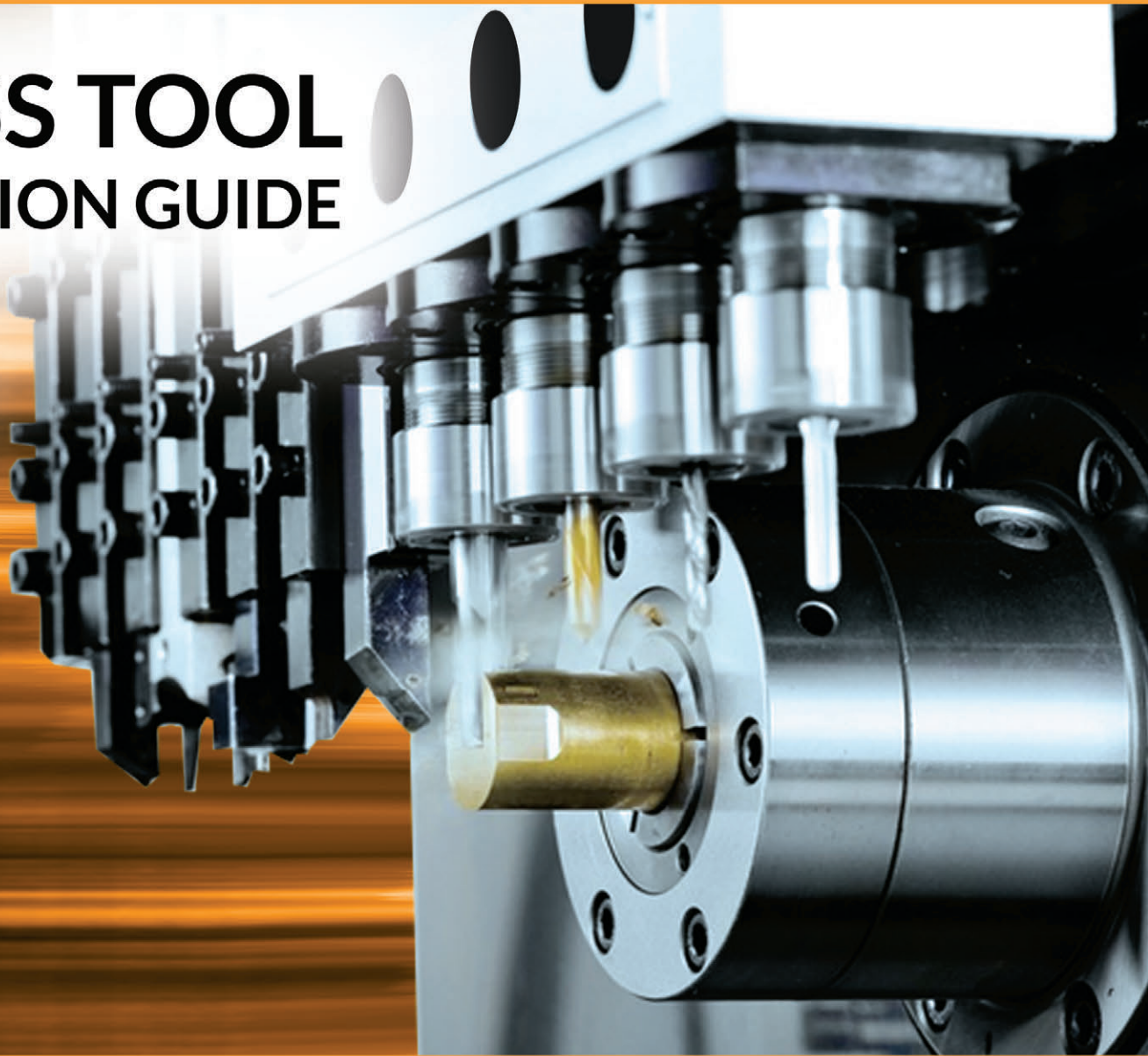


# KOMA

## SWISS TOOL SELECTION GUIDE



# ABOUT

## KOMA PRECISION

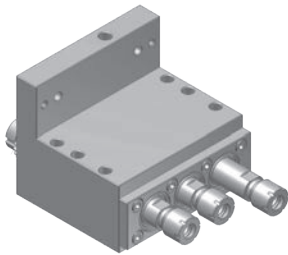
For over thirty years Koma Precision has been the foremost source for the finest the world has to offer in machine tool Productivity Innovation.

With over 30,000 rotary table installations, Koma is the largest distributor of Tsudakoma NC rotary tables and indexers in the world. With over 12,000 angle heads and live tools installed, Koma is the world's largest supplier for Alberti - the originator and the foremost innovator of productivity tooling.



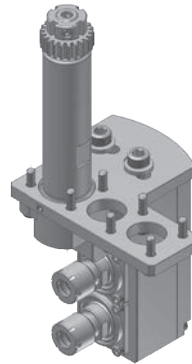
# NOMURA SWISS TOOLING

## NN16SB6 TOOLING FOR GANG TOOL POST



**NUB261100**  
3 spindle drilling/milling unit

RATIO 1 : 1  
RPM(MAX) 6000  
TOOL CLAMPING ER11M



**NUN412000**  
2 spindle drilling/milling unit

RATIO 1 : 1  
RPM(MAX) 6000  
TOOL CLAMPING ER11M  
ANGLE ADJUSTMENT  $\pm 10^\circ$

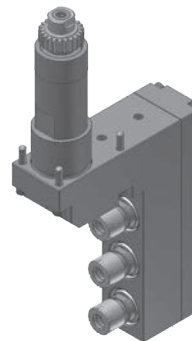
## NN16UB/NN20UB TOOLING FOR GANG TOOL POST



**NUU266100**  
Cross drilling/milling unit

RATIO 1 : 1  
RPM(MAX) 6000  
TOOL CLAMPING ER16M

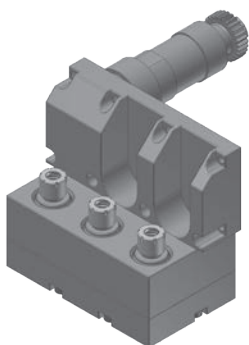
## NN20UB8 TOOLING FOR GANG TOOL POST



**NUN441300-1**  
3 spindle drilling/milling unit

RATIO 1 : 1  
RPM(MAX) 3000  
TOOL CLAMPING ER11M

## NN32YB2 TOOLING FOR GANG TOOL POST



**NUN441300**  
3 spindle drilling/milling unit

RATIO 1 : 1  
RPM(MAX) 6000  
TOOL CLAMPING ER11M



