

# KOMMA



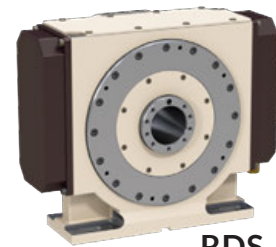
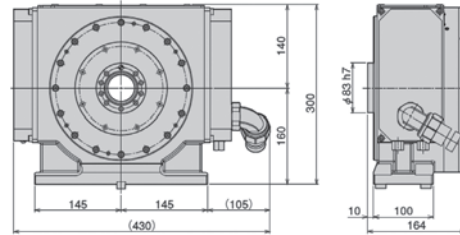
**DIRECT  
DRIVE**

**TSUDAKOMA**

# DIRECT DRIVE

## Tsudakoma RDS-200 Fanuc & Mitsubishi Controls



Model		RDS-200 F	RDS-200 M
Spindle diameter		83H7	83H7
Center height		160	160
Center bore	Nose Diameter	55H7	55H7
	Thru Diameter	45H7	45H7
Servo motor*		TSUDA-02 F	TSUDA-02 M
Speed reduction ratio		1/1	1/1
Maximum table speed rpm		300	300
Clamp system		Pneumatic	Pneumatic
Clamp torque @72psi Nm (ft. lbs.)		600 (443)	600 (443)
Indexing accuracy arc sec.		±10	±10
Indexing repeatability arc sec.		±2	±2
Net Weight kg (lbs.)		65 (144)	65 (144)
Allowable work weight kg (lbs)	kg (lbs)	100 (220)	100 (220)

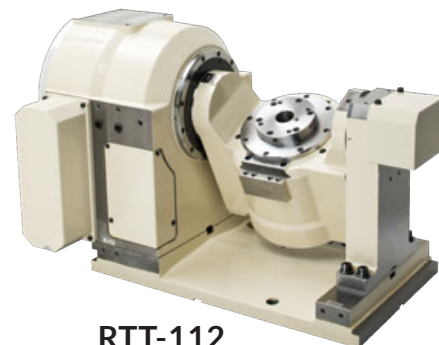
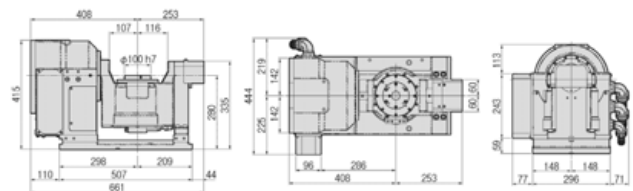


RDS-200

Specifications subject to change without notice

## Tsudakoma RTT-112,CA Fanuc Controls

Model		RTT-112	
Tilt Range		-110°~+110°	
Spindle Nose		100	
Spindle at 0° Position		280	
Center Height at 90° Position		280	
Guide Block Width		14h7	
Servo motor*		<i>Rotary</i>	<i>Tilt</i>
		Dis 60/400	Dis 150/300
Max Motor Torque Nm (ft. lbs.)		100 (73.7)	380 (280)
Continuous Motor Torque Nm (ft. lbs.)		24 (17.7)	60 (44.2)
Maximum Table Speed rpm		150	100
Clamp Torque @ 72psi Nm (ft. lbs.)		-	80 (59)
Indexing Accuracy arc sec.		±10	-
Tilting Accuracy arc sec.		-	±10
Net Weight kg (lbs.)		190 (418)	
Allowable work weight kg (lbs)	 0° tilt angle	30 (66)	
	 0°~90° tilt angle	30 (66)	



RTT-112

\*Other motors and rpm available • \*\*Booster optional  
Specifications subject to change without notice • Dimensions = mm