

# T90cn-1,5M Aluminum

**ACT9015C.ALU**



Ratio  
Rapporto  
**1:1**



RPM  
Velocità  
**8.000 min<sup>-1</sup>**



Max. axial load  
Max. carico assiale  
**250 N**



Torque  
Momento torcente  
**15 Nm**



Weight  
Peso  
**2,9 kg**

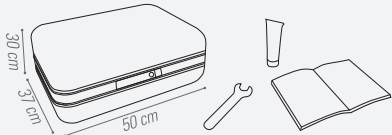


Collet  
Pinza  
**ER 16 (ø 1-10 mm)**

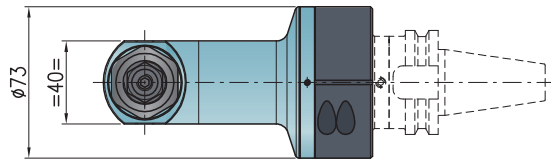
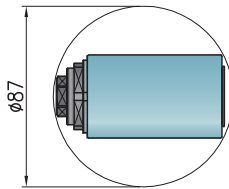
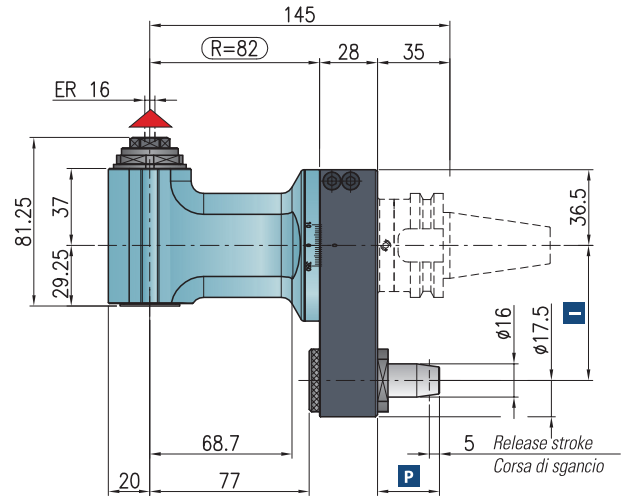


Shank  
Cono  
**ISO 30DIN-69871/BT-30**

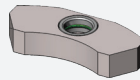
\* STANDARD EQUIPMENT INCLUDES:



Minimum diameter without tool  
Diametro minimo senza utensile



Retaining block / Tassello di ritegno / Stop-Block  
**NOT INCLUDED - NON INCLUSO**



Possibilità refrigerante / Internal coolant

▲ Direction of rotation opposite to machine spindle / senso di rotazione contrario al mandrino

	FANUC ROBODRILL	BROTHER S2D	BROTHER TC-32	BROTHER R450X1	BROTHER S500 S700 S1000	DMG MORI MILLTAP 700
I	65	80	80	50	80	65
P	24	24	30	24	25,75	24

Dual contact spindles available/Disponibilità coni a doppio contatto

Opzione / Option



**AIR/OIL**

Air / oil lubrication  
Lubrificazione aria / olio



bar max  
**40**

Coolant through spindle  
Refrigerante attraverso il cono