

TR90cn-2,5

ACTR925C



Ratio
Rapporto
1:1



RPM OUTPUT
Velocità
6000 min⁻¹



Max. axial load
Max. carico assiale
510 N



Torque
Momento torcente
30 Nm

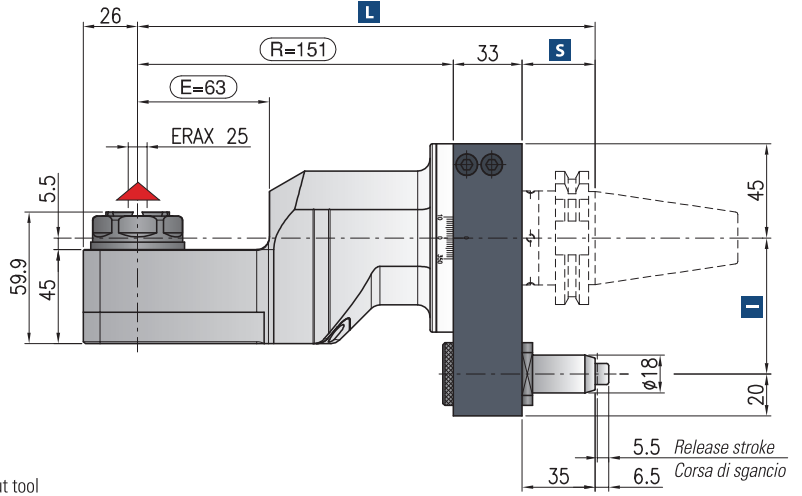
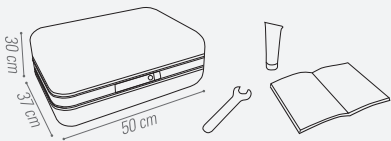


Weight
Peso
7.5 kg

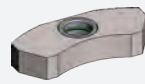
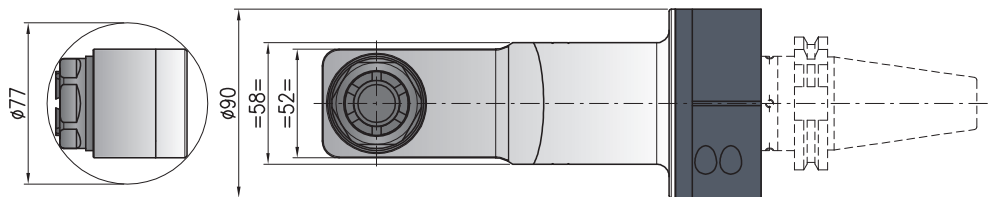


Collet
Pinza
ER-AX 25 (ø1-16mm)

* STANDARD EQUIPMENT INCLUDES:



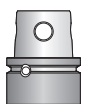
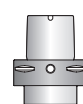
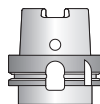
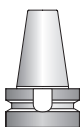
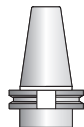
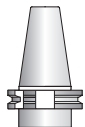
Minimum diameter without tool
Diametro minimo senza utensile



Retaining block / Tassello di ritegno / Stop-Block
NOT INCLUDED - NON INCLUSO

Dry running also possible / Rotazione a secco possibile

▲ Direction of rotation opposite to machine spindle / senso di rotazione contrario al mandrino



Shank/Cono	DIN-69871	CAT	MAS-BT		HSK		CAPTO		KM
Size/Grandezza	40	50	40	50	63-80	100	C5-C6	C8	50-63
I	65-80-(110*)	80-(110*)	65-80-(110*)	80-(110*)	65-80-(110*)	80-(110*)	65-80-(110*)	80-(110*)	65-80-(110*)
S	35	35	35	41	42	45	38	40	40
L	219	219	219	225	226	229	222	224	224

Dual contact spindles available/Disponibilità coni a doppio contatto

*optional

Non interchangeable input drive shank/ Coni di attacco non intercambiabili

Opzione / Option



bar max
12

Coolant through pin
Adduzione refrigerante attraverso il perno



bar max
100

Coolant through spindle
Refrigerante attraverso il cono