

T90cn-3,5M Aluminum

ACT9035C.ALU



Ratio
Rapporto
1:1



RPM
Velocità
4.000 min⁻¹



Max. axial load
Max. carico assiale
1250 N



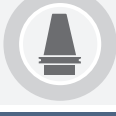
Torque
Momento torcente
40 Nm



Weight
Peso
5,5 kg

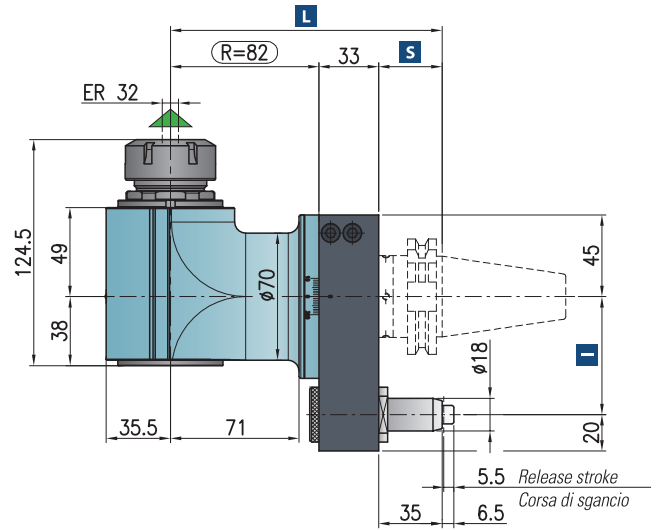
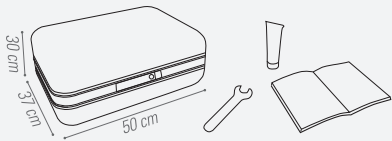


Collet
Pinza
ER 32 - (ø2-20 mm)

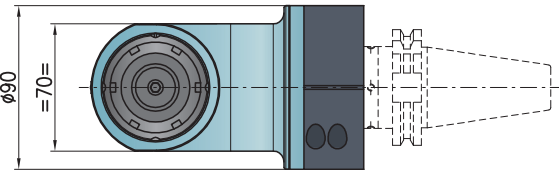
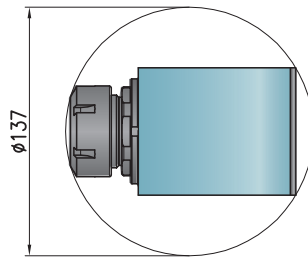


Shank
Cono
ISO40 DIN-69871/BT-40

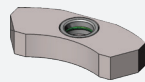
*** STANDARD EQUIPMENT INCLUDES:**



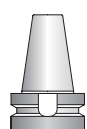
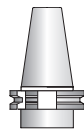
Minimum diameter without tool
Diametro minimo senza utensile



Retaining block / Tassello di ritegno / Stop-Block
NOT INCLUDED - NON INCLUSO



▲ Direction of rotation same as machine spindle / senso di rotazione uguale al mandrino



Shank/Cono	DIN-69871		CAT	MAS-BT
Size/Grandezza	40	40	40	40
I	65-80	80-(110*)	65-80-(110*)	
S	35	35	35	
L	150	150	150	

Dual contact spindles available/Disponibilità coni a doppio contatto
*optional

Non interchangeable input drive shank/ Coni di attacco non intercambiabili

Opzione / Option



AIR/OIL

Air / oil lubrication
Lubrificazione aria / olio



bar max
40

Coolant through spindle
Refrigerante attraverso il cono