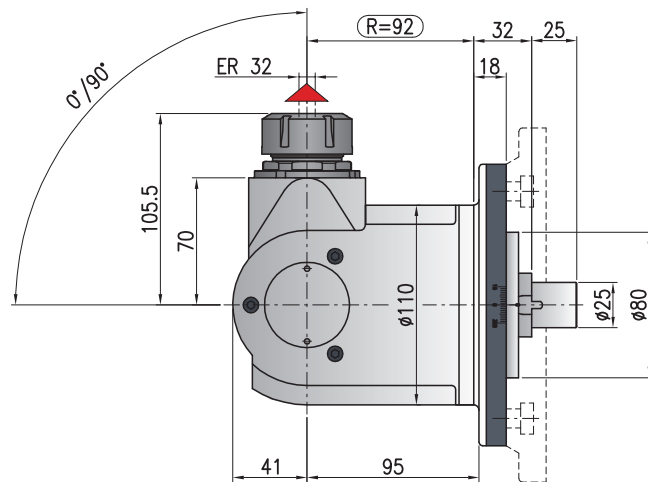
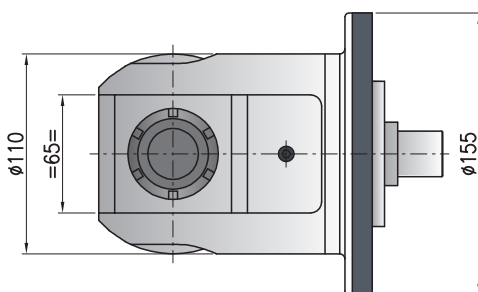
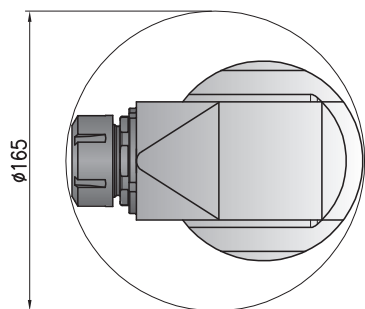


TCU-3,5

AMTCU35C



Minimum diameter without tool
Diametro minimo senza utensile



Ratio
Rapporto
1:1



RPM
Velocità
4.000 min⁻¹



Max. axial load
Max. carico assiale
715 N



Torque
Momento torcente
32 Nm

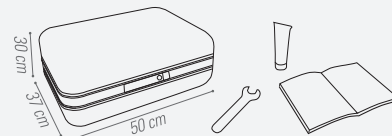


Weight
Peso
13 kg



Collet
Pinza
ER-32 (ø 2/20 mm)

*** STANDARD EQUIPMENT INCLUDES:**



Direction of rotation opposite to machine spindle / *sensò di rotazione contrario al mandrino*

Shank/ <i>Cono</i>	DIN-69871	CAT	MAS-BT	HSK	CAPTO	KM

Option / Opzione



min⁻¹
6.000

High speed optional RPM max.
Opzione alta velocità RPM max.



Ø mm max.
20

Weldon output
Weldon