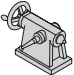
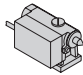
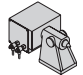


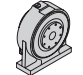


TAILSTOCKS & SUPPORT SPINDLES

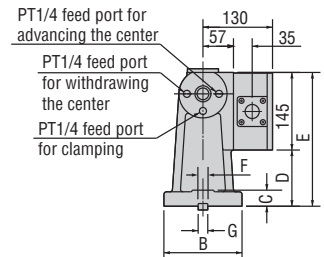
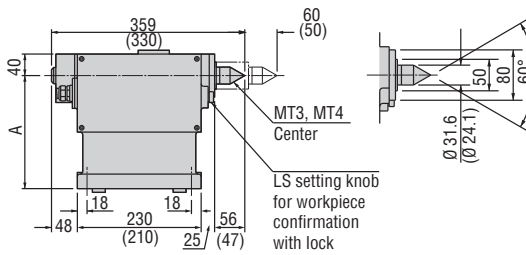
Rotary Table Model	Tailstock Model (Number = Center Height)			Support Spindle Model (Number = Center Height)		
	Manual (M)	Hydraulic (H)	Pneumatic (P)	No Clamping	Pneumatic (P)	Hydraulic (H)
						
RN-100	TL-110M	-	-	-	-	-
RWE-160, RWA-160, RWE-160 TPC	TL-135M	TLH-135	TLP-135	TS-135	TS-135P	-
	TTJ-135M		ATTJ-135P			
RWE-200, RWE-250, RWA-200, RWA-250, RNCM-251, RWB-250, RWE-200 TPC	TL-160M	TLH-160	TLP-160	TS-160	TS-160P	SSB-160
	TTJ-160M		ATTJ-160P			
RWE-320, RWA-320, RNCM-301, RWB-320, TWA-200	TL-210M	TLH-210	*	TS-210	TS-210P	SSB-210
	TTJ-210M					RTA-210H
RNCM/RNCV-401, RWB-400	TL-255M	TLH-255	*	*	*	SSB-255
						RTA-255H
RWB-500, RNCM-501	TL-310M	*	*	*	*	SSB-310
RNCM/RNCK-631	TL-400M	*	*	*	*	*
RNCV-801	TL-530M	*	*	*	*	*
TWA-320	TL-255M	TLH-255	*	*	*	*
THNC-251	TL-210M	TLH-210	*	*	*	SSB-210
THNC-301	TL-235M	*	*	*	*	*

*All tailstocks & support spindles can be mounted on risers to match the required table center height.

HYDRAULIC TAILSTOCK DIMENSIONS

► TLH - 

TLH-160

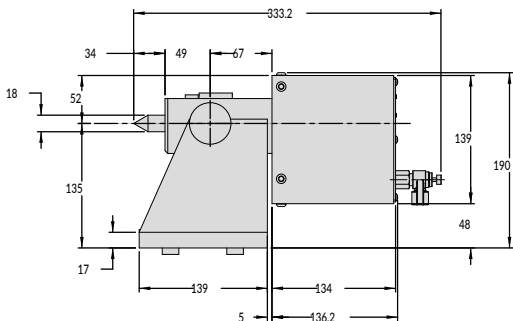


Tailstock Model	A	B	C	D	E	F	Carbide center	Hydraulic pressure PSI	Center thrust force N (lbf.)	Clamp torque N (lbf.)	Weight kg (lbs.)
TLH-135	135	110	25	30	175	19	MT3	218 ~ 986	1,666 (373)	2,450 (549)	28 (62)
TLH-160	160	130	30	55	200		MT4				33 (73)
TLH-210	210	146		105	250	23			36 (79)		
TLH-255	255	170	150	295	40 (88)						

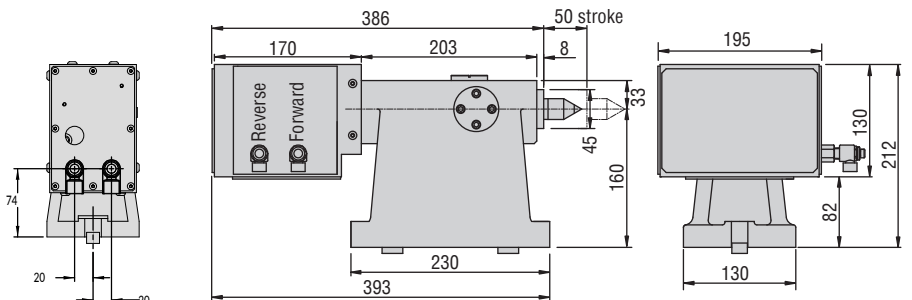
The above table shows the center thrust force and clamp torque when hydraulic pressure is 500 PSI.

PNEUMATIC TAILSTOCK DIMENSIONS

► TLP-135



► TLP-160

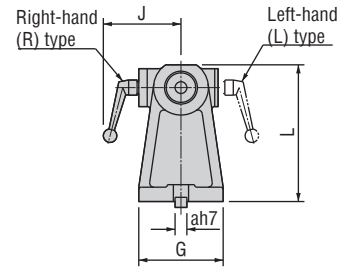
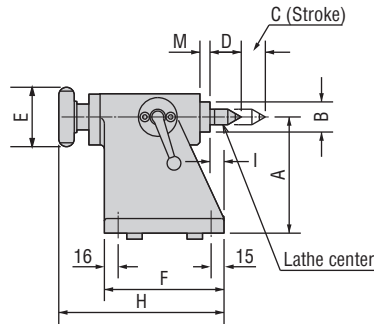


Tailstock Model	Stroke	Morse Taper	Forward thrust force @72 psi	Reverse thrust force @72 psi
TLP-135	30mm	MT2	1,557 N (349 lbf)	1,400 N (314 lbf)
TLP-160	50mm	MT3		

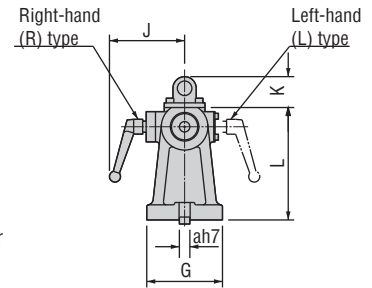
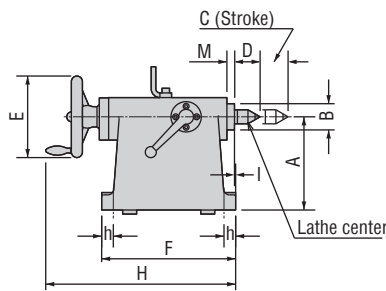
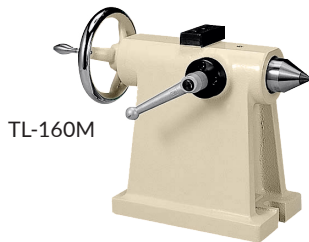
MANUAL TAILSTOCK DIMENSIONS

Tailstock Model	Morse taper	A Center height	B Center dia.	C Stroke	D Lathe center	E Handle dia.	F x G Base Dimension	H	I	J	K	L	M	a	b	c	d	e	g	h	Weight kg (lbs.)	
TL-110M	MT2	110	35	28	36	69	139 x 100	192	16	92	-	137	12	14	12	55	8	23	20	-	8 (18)	
TL-135M	MT2	135	35	28	36		139 x 100					162									9 (20)	
TL-160M	MT3	160	45	48	44	140	230 x 130	326	2	129	53	193	13	75	30	17.5	30	-	-	-	22 (48)	
TL-180M	MT3	180					223					24 (53)										
TL-210M	MT3	210					243					26 (57)										
TL-235M	MT4	235	50	53	52.5	160	270 x 160	383	12	131	65	270	8	18	16	80	11	28	35	-	-	30 (66)
TL-255M	MT4	255					290					38 (84)										
TL-280M	MT4	280	60	53	52.5	180	315 x 220	417	15	154	65	350	10	85	40	20	-	-	-	-	-	63 (139)
TL-310M	MT4	310					440					76 (167)										
TL-350M	MT4	350					590					138 (304)										
TL-400M	MT4	400	80	68	225	410 x 290	532	30	164	65	65	5	22	18	90	32	-	-	-	-	-	138 (304)
TL-530M	MT4	530																				80

TL-110M/135M

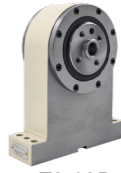
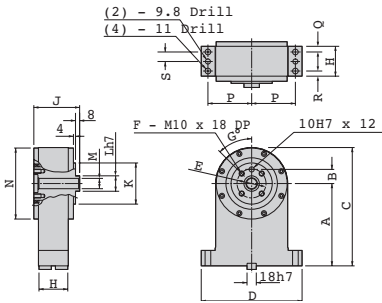


TL - M

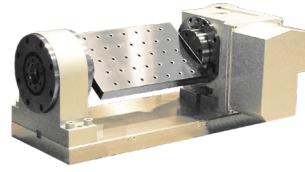


SUPPORT SPINDLES

TS - (No clamping)



TS-135

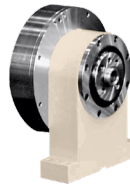
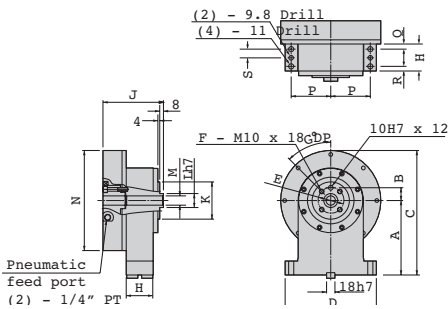


TS-135 + RWA-160

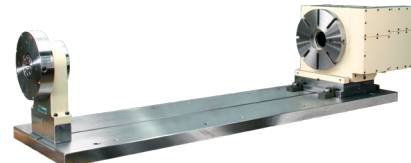
Unit: mm

Model	A	B	C	D	E	F	G	H	J	K	L	M	N	P	Q	R	S	Net Weight kg (lbs.)
TS-135	135	27.5	205	196	55	4	45	58	89	80	30	20	138	85	11	10	18.5	13 (29)
TS-160	160	27.5	230	196	55	4	45	58	89	80	30	20	138	85	11	10	18.5	15 (33)
TS-210	210	37.5	295	226	75	6	30	67	101	100	50	40	168	100	11	11	22.5	18 (40)

TS - P (Pneumatic clamping)



TS-160P

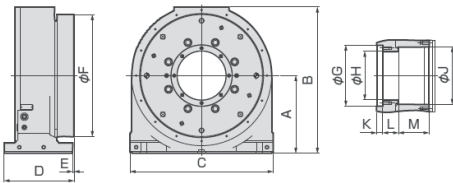


TS-210P + RWA-320R,B

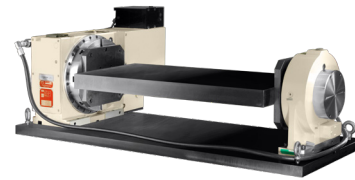
Unit: mm

Model	A	B	C	D	E	F	G	H	J	K	L	M	N	P	Q	R	S	Clamp torque Nm (ft. lbs) @ 72 PSI	Net Weight kg (lbs.)
TS-135P	135	27.5	218.5	196	55	4	45	58	130	80	30	20	167	85	11	10	18.5	156.9 (115.6)	20 (44)
TS-160P	160	27.5	267.5	196	55	4	45	58	130	80	30	20	215	85	11	10	18.5	383.7 (282.8)	27 (59)
TS-210P	210	37.5	337.5	226	75	6	30	67	141	100	50	40	255	100	11	11	22.5	779.1 (574.2)	45 (99)

SSB - (Hydraulic clamping)



SSB-160



SSB-210 + RWB-320

Unit: mm

Model	A	B	C	D	E	F	G	H	J	K	L	M	Clamp torque Nm (ft. lbs) @ 500 PSI	Net Weight kg (lbs.)
SSB-160	160	303	290	175	5	250	105H7	80H7	95H8	15	42	66	2,000 (1,475)	60 (132)
SSB-210	210	396	380	210	5	320	150H7	120H7	145H8	15	50	90	4,700 (3,467)	120 (265)
SSB-255	255	480	470	230	5	400	200H7	160H7	190H8	20	52	100	8,000 (5,900)	185 (408)
SSB-310	310	560	470	230	5	500	200H7	160H7	190H8	20	52	100	8,000 (5,900)	230 (507)

FACE PLATES



Unit: mm

Model	A	B	C	D	E	F	G	H
RN-100	135	30	50H7	-	10H8 ^{+0.012}	16	17 ^{+0.01}	7
TTNC-102-2, TN-101, TWA-130	135	25	40H7	70	12H8			
RWE-160, RWA-160, RWE-160 TPC, TWA-160	160	30	50H7	80	12H8 ^{+0.012}	19	19 ^{+0.01}	8
RWE-160, RWA-160, RWE-160 TPC, TWA-160	200	30	50H7	80	12H8			
RWE-200, RWA-200, RWE-200 TPC, TWA-200	200	35	60H7	90	12H8			
RWE-200, RWA-200, RWE-200 TPC, TWA-200	250	35	60H7	90	12H8			

