

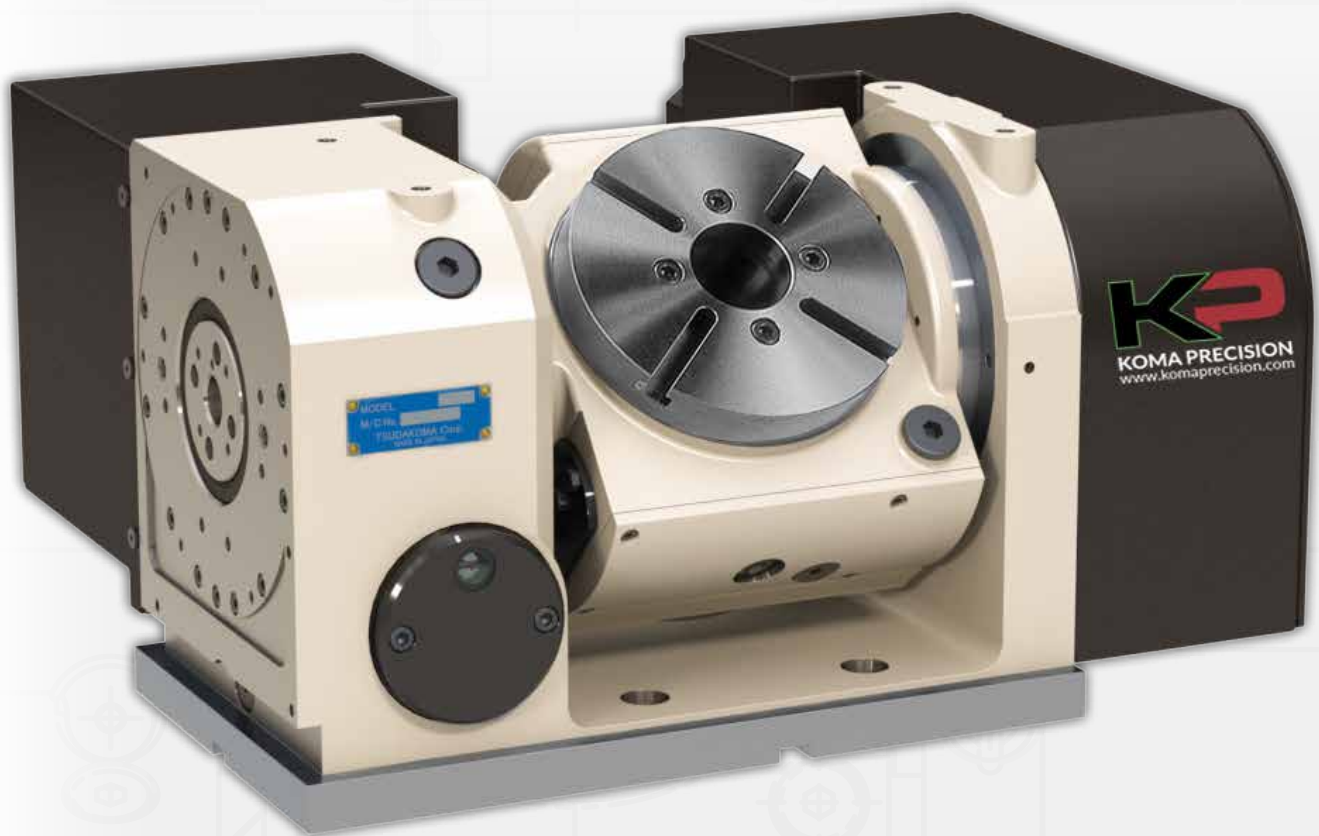


**KOMA PRECISION**  
THE KEY TO PERFORMANCE  
[www.komaprecision.com](http://www.komaprecision.com)

# TSUDAKOMA

## Rotary Table Selection Guide

2022



**WE FOCUS ON BEING THE BEST—**  
that's why leading companies choose Koma.

WE ARE THE EXCLUSIVE NORTH AMERICAN  
IMPORTER, NATIONAL DISTRIBUTOR, AND  
SERVICE CENTER FOR TSUDAKOMA ROTARY TABLES.

# KOMA PRECISION

---

## ABOUT US

For over forty years Koma Precision has been the foremost source for the finest the world has to offer in machine tool Productivity Innovation.

With over 30,000 rotary table installations, Koma is the largest distributor of Tsudakoma NC rotary tables and indexers in the world. With over 12,000 angle heads and live tools installed, Koma is the world's largest supplier for Alberti - the originator and the foremost innovator of productivity tooling.



# ROTARY TABLES



RWE SERIES



RWA SERIES



RBS SERIES



RWB SERIES



RN-MULTI SERIES



TWA SERIES



TBS SERIES



5<sup>TH</sup> AXIS TILTING  
RTT-111, CA

VM-43R				
RWE SERIES	RWE-160R	RWE-200R		
RWA SERIES	RWA-160R	RWA-200R	RWA-250R	
RBS SERIES	RBS-160	RBS-250		
RN MULTI SERIES	RN-100R-2	RN-100R-3	RN-100R-4	
TWA SERIES	TWA-130			
TBS SERIES	TBS-130			
5 <sup>th</sup> AXIS TILTING	RTT-111, CA			
VM-53R				
RWE SERIES	RWE-200R			
RWA SERIES	RWA-200R	RWA-250R	RWA-320R	
RBS SERIES	RBS-250	RBS-320		
RWB SERIES	RWB-250R			
RN MULTI SERIES	RN-100R-2	RN-100R-3	RN-100R-4	
TWA SERIES	TWA-130	TWA-160		
TBS SERIES	TBS-130	TBS-160		
5 <sup>th</sup> AXIS TILTING	RTT-111, CA			



**VM-43R**



**VM-53R**

# OKK VM SERIES

VM-76R			
RWA SERIES	RWA-250R	RWA-320R	
RBS SERIES	RBS-250	RBS-320	
RWB SERIES	RWB-320R	RWB-400R	
RN MULTI SERIES	RN-100R-2	RN-100R-3	RN-100R-4
TWA SERIES	TWA-160	TWA-200	
TBS SERIES	TBS-160		
VM-660R			
RWA SERIES	RWA-250R	RWA-320R	
RBS SERIES	RBS-250	RBS-320	
RWB SERIES	RWB-250R	RWB-320R	
RN MULTI SERIES	RN-100R-2	RN-100R-3	RN-100R-4
TWA SERIES	TWA-130	TWA-160	
TBS SERIES	TBS-130	TBS-160	
5 <sup>th</sup> AXIS TILTING	RTT-111, CA		



**VM-76R**



**VM-660R**

VM-940R			
RWB SERIES	RWB-400R	RWB-500R	
TWA SERIES	TWA-200	TN-320	
5 <sup>th</sup> AXIS TILTING	RTT-111, CA		
VP-600			
RWA SERIES	RWA-250R	RWA-320R	
RBS SERIES	RBS-250	RBS-320	
RWB SERIES	RWB-250R	RWB-320R	
RN MULTI SERIES	RN-100R-2	RN-100R-3	RN-100R-4
TWA SERIES	TWA-160	TWA-200	
TBS SERIES	TBS-160		



**VM-940R**



**VP-600**

# OKK KVC SERIES

KCV-800			
RWB SERIES	RWB-320R	RWB-400R	
RN MULTI SERIES	RN-100R-2	RN-100R-3	RN-100R-4
TWA SERIES	TWA-200	TN-320	
KCV-1000			
RWB SERIES	RWB-250R	RWB-320R	
RN MULTI SERIES	RN-100R-2	RN-100R-3	RN-100R-4
TWA SERIES	TN-320		



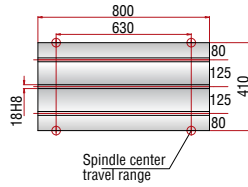
**KCV-800**



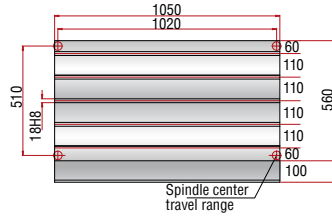
**KCV-1000**

# ROTARY TABLE DIMENSIONS

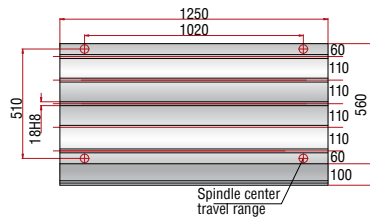
**VM-43R**



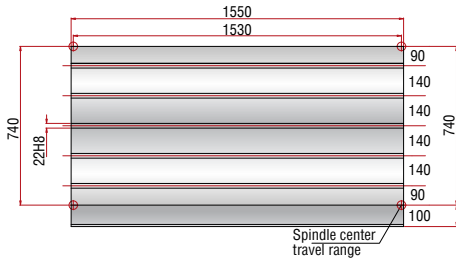
**VM-53R Type B**



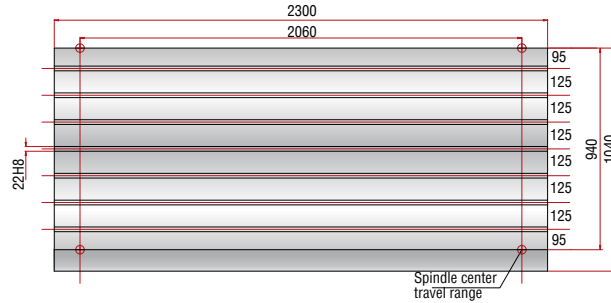
**VM-53R Type C**



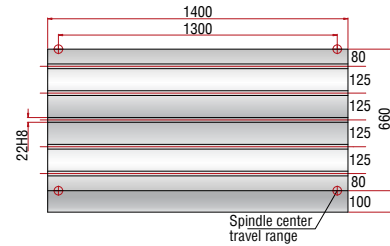
**VM-76R**



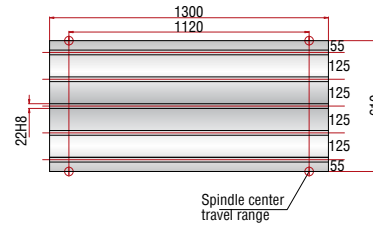
**VM-940R**



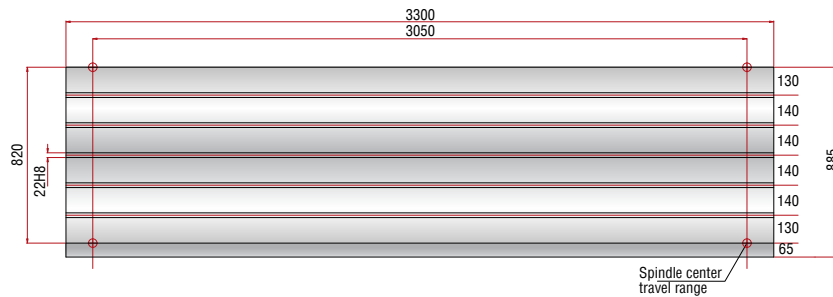
**VM-660R**



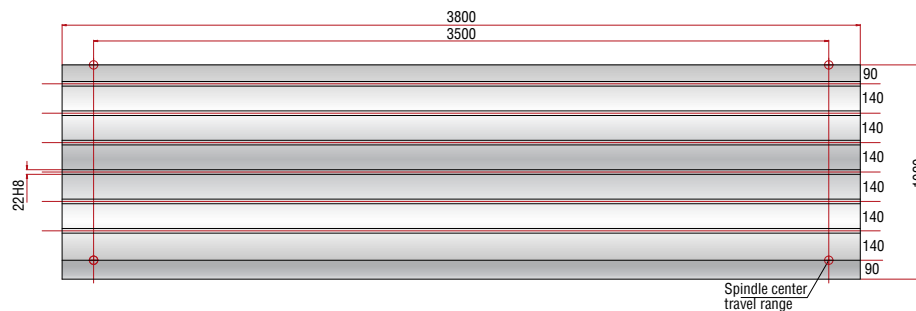
**VP-600**



**KCV-800**



**KCV-1000**

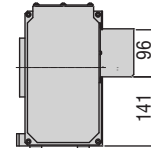
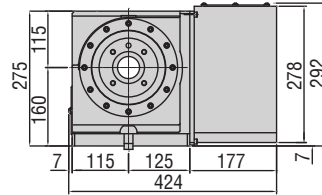
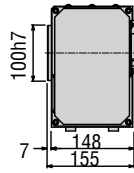
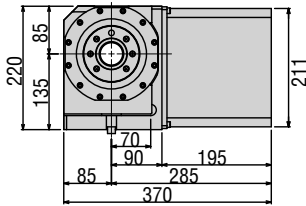




# ROTARY TABLE DIMENSIONS

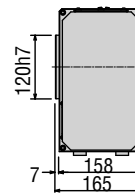
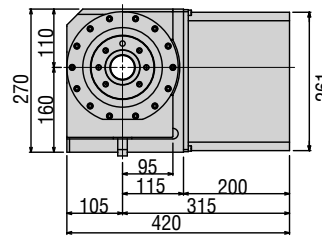
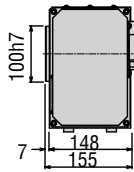
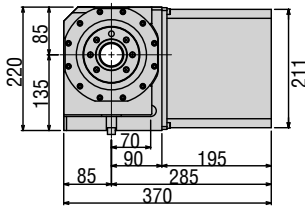
## RWE, RWA, & RBS-Series ROTARY TABLE DIMENSIONS (Drawings Not To Scale)

RWE-160



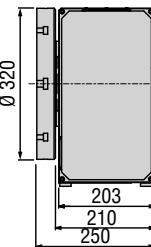
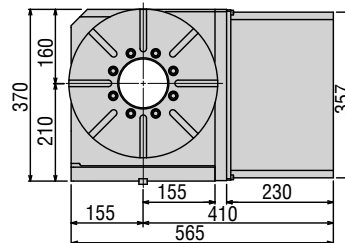
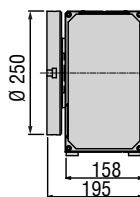
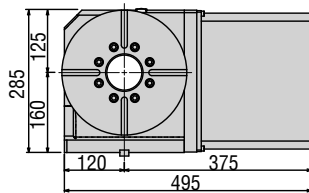
RWE-200

RWA-160



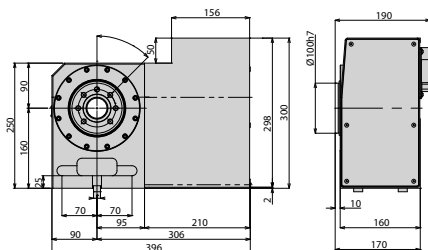
RWA-200

RWA-250

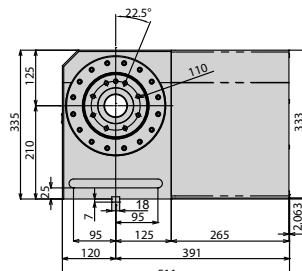


RWA-320

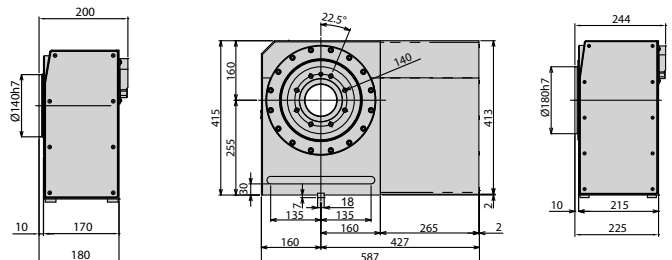
RBS-160



RBS-250



RBS-320

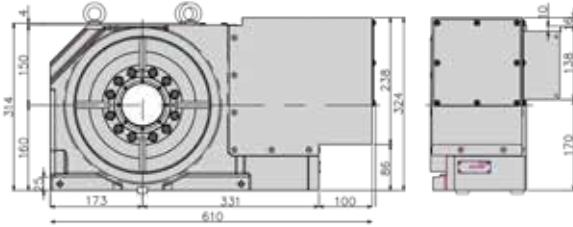


Please contact Koma Precision to confirm OKK / Tsudakoma Rotary Table working envelope.

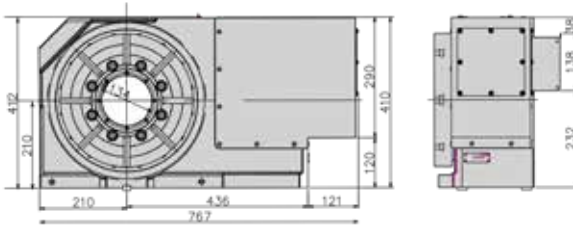
## RN-Multi, RTT-111 CA & RWB-Series ROTARY TABLES

(Drawings Not To Scale)

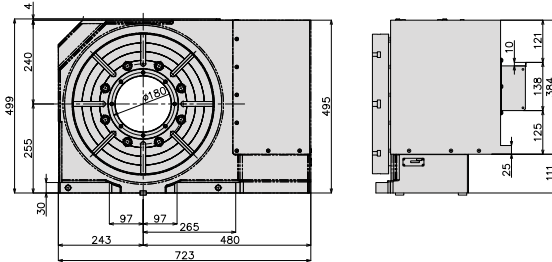
**RWB-250R**



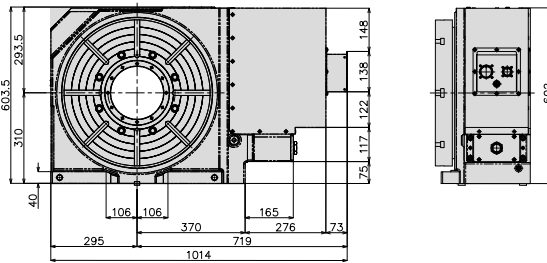
**RWB-320R**



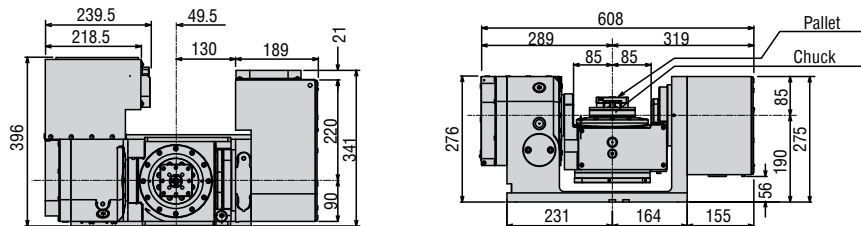
**RWB-400R**



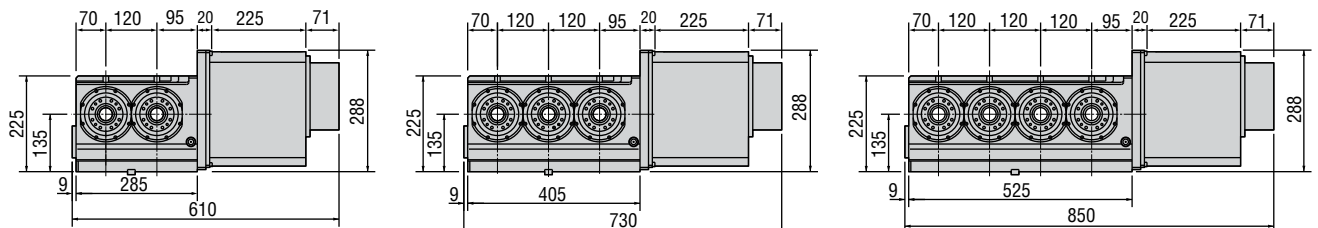
**RWB-500R**



**RTT-111, CA**



**RN-100,R-2,3,4**



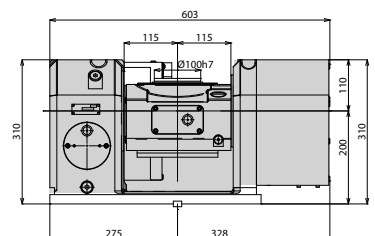
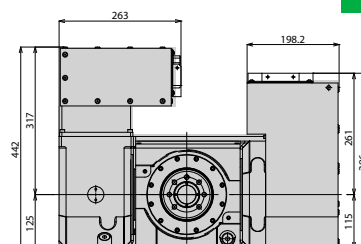
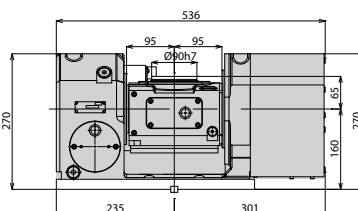
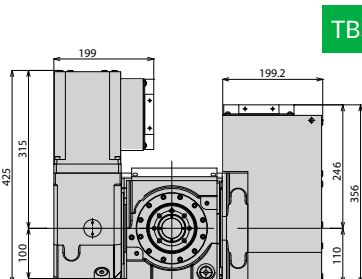
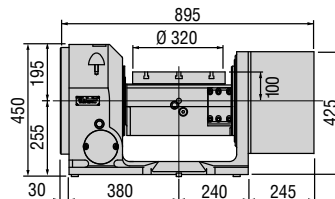
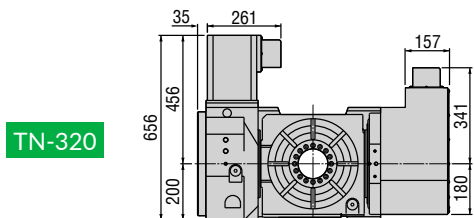
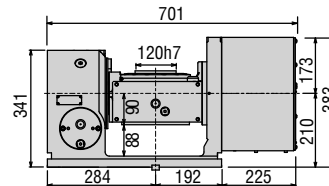
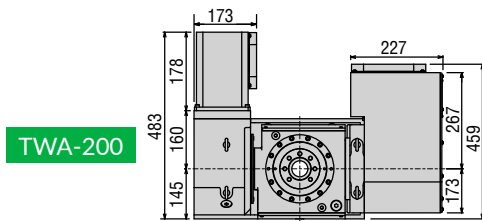
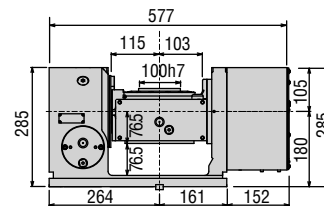
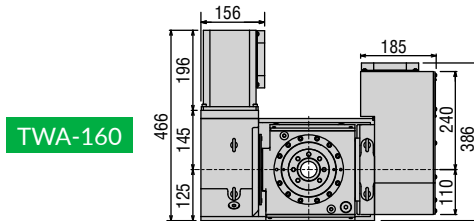
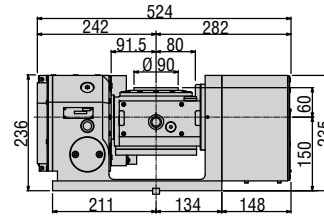
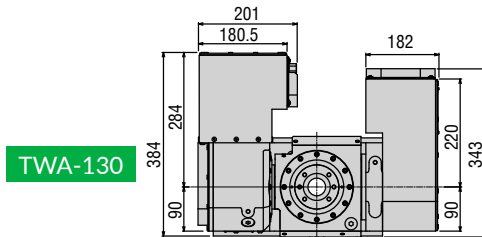
Please contact Koma Precision to confirm OKK / Tsudakoma Rotary Table working envelope.

[www.komaprecision.com](http://www.komaprecision.com) • [info@komaprecision.com](mailto:info@komaprecision.com) • 1-800-249-5662

# ROTARY TABLE DIMENSIONS

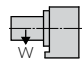
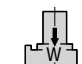
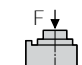
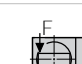
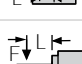
## TWA & TBS-Series ROTARY TABLE DIMENSIONS

(Drawings Not To Scale)



Please contact Koma Precision to confirm OKK / Tsudakoma Rotary Table working envelope.

## RWE & RWA-Series Rotary Tables

Table Model		RWE-160	RWE-200	RWA-160	RWA-200	RWA-250 (S)	RWA-320 (S)
Versions available		R, L	R, L	R, L	R, L	R, L	R, L
Spindle outer diameter		100h7	120h7	100h7	120h7	140h7	180h7
Table diameter (optional)		(160, 200)	(200, 250)	(160, 200)	(200, 250)	250	320
Center height		135	160	135	160	160	210
Center bore	Nose Diameter	55H7	65H7	55H7	65H7	80H7	115H7
	Thru Diameter	40	45	40	45	50	85
Table T-slot width (with faceplate)		(12H8)	(12H8)	(12H8)	(12H8)	12H8	14H7
Guide block width		14h7	18h7	14h7	18h7	18h7	18h7
Servo motor (Fanuc)*		Alpha 2i	Alpha 4i	Alpha 2i	Alpha 4i	Alpha 8i (8is)	Alpha 8i (22is)
Maximum motor speed	rpm	5,000	5,000	5,000	5,000	4,000 (4,000)	4,000 (3,000)
Speed reduction ratio		1/72	1/72	1/72	1/72	1/90 (1/45)	1/120 (1/45)
Maximum table speed	rpm	69.4	69.4	69.4	69.4	44.4 (88.9)	33.3 (66.6)
Inertia converted into motor shaft	x 10 <sup>-3</sup> kg·m <sup>2</sup>	.09	.17	.09	.17	.41 (.44)	.52 (1.66)
Clamp system		Pneumatic Disc Clamp			Pneumatic Dual Taper		
Clamp torque @72psi	Nm (ft. lbs.)	250 (180)	400 (295)	500 (369)	800 (590)	1,000 (737)	1,500 (1,106)
Indexing accuracy	arc sec.	±12.5	±10	±12.5	±10		
Net Weight	kg (lbs.)	40 (88)	61 (135)	38 (84)	61 (134)	80 (176)	145 (319)
Allowable wheel torque	Nm (ft. lbs.)	206 (152)	288 (212)	206 (152)	288 (212)	596 (439)	939 (692)
Allowable work inertia	kg·m <sup>2</sup>	.64	1.25	.64	1.25	1.95	4.48
Allowable work weight	 kg (lbs) [w/ tailstock]	100 (220) [200 (441)]	125 (275) [250 (551)]	100 (220) [175 (385)]	125 (275) [250 (550)]	125 (275) [250 (550)]	175 (385) [375 (825)]
	 kg (lbs)	-	-	200 (440)	250 (550)	250 (550)	350 (770)
Allowable load when table clamped	 N (lbf)	10,800 (2,419)	14,400 (3,226)	10,800 (2,419)	14,400 (3,226)	14,400 (3,226)	24,800 (5,555)
	 Nm (ft. lbs.)	500 (369)	800 (590)	500 (369)	800 (590)	1,000 (737)	1,500 (1,106)
	 Nm (ft. lbs.)	780 (575)	1,900 (1,400)	780 (575)	1,900 (1,400)	1,900 (1,400)	4,700 (3,464)

\* Other motors & RPM available

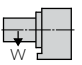
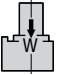
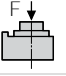
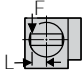
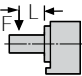
\*\* Booster optional

Dimensions = mm

Specifications subject to change without notice

# ROTARY TABLE SPECIFICATIONS

## RN-Multi, RBS & RWB-Series Rotary Tables

Table Model		RN-100-2,3,4	RBS-160	RBS-250	RBS-320	RWB-250	RWB-320	RWB-400	RWB-500
Versions available		R, L	R	R	R	R, L	R, L	R, L	R, L
Spindle outer diameter		80h7	100h7	140h7	180h7	-	-	-	-
Table diameter (optional)		(135)	(160, 200)	250	320	250	320	400	500
Center height		110	160	210	255	160	210	255	310
Center bore	Nose Diameter	50H7	55H7	80H7	115H7	105	150	200	220
	Thru Diameter	30	40	50	85	80	120	160	182
Table T-slot width (with faceplate)		10H8	12H8	12H8	14H8	12H7	14H7	14H7	18H7
Minimum spindle center distance		120	-	-	-	-	-	-	-
Guide block width		14h7	14h7	18h7		18h7			
Servo motor (Fanuc)*		Alpha 2i	Alpha 4i	Alpha 8i	Alpha 12i	Alpha 8i	Alpha 12i	Alpha 12i	Alpha 12i
Maximum motor speed	rpm	5,000	5,000	4,000	4,000	4,000	4,000	4,000	4,000
Speed reduction ratio		1/36	1/36	1/36	1/36	1/90	1/90	1/90	1/180
Number of spindles		2 3 4	-	-	-	-	-	-	-
Maximum table speed	rpm	83.3	138.9	111.1	111.1	44.4	44.4	44.4	22.2
Inertia converted into motor shaft	x 10 <sup>-3</sup> kg·m <sup>2</sup>	.64 .92 1.06	.19	0.42	2.24	1.27	3.53	4.63	3.00
Clamp system		Pneumatic		Pneumatic		Hydraulic			
Clamp torque	Nm (ft. lbs.)	80 (59)	700 (516)	1480 (1076)	2580 (1901)	1,300 (958)	3,100 (2,284)	5,500 (4,053)	6,100 (4,496)
Indexing accuracy	arc sec.	±22.5	±12.5	±7.5		±7			
Net Weight	kg (lbs.)	28 (62)	44 (97)	100 (220)	200 (440)	125 (286)	250 (550)	360 (792)	620 (1,364)
Allowable wheel torque	Nm (ft. lbs.)	176 (130)	206 (152)	288 (212)	596 (439)	1,011 (745)	2,127 (1,567)	3,958 (2,917)	3,276 (2,414)
Allowable work inertia	kg·m <sup>2</sup>	.10	.48	1.95	4.48	7.0	19.2	36	112
Allowable work weight	 kg (lbs) [w/ tailstock]	25 (55) [50 (110)]	75 (165) [150 (330)]	125 (275) [250 (550)]	175 (385) [350 (770)]	385 (175) [770 (350)]	550 (250) [1,100 (500)]	660 (300) [1,320 (600)]	1,320 (600) [2,460 (1,200)]
	 kg (lbs)	50 (110)	-	250 (550)	350 (770)	770 (350)	1,100 (500)	1,320 (600)	2,640 (1,200)
Allowable load when table clamped	 N (lbf)	5,880 (1,317)	7,840 (1,762)	14,400 (3,226)	24,800 (5,555)	35,000 (7,700)	89,000 (19,580)	109,000 (23,980)	240,000 (52,800)
	 Nm (ft. lbs.)	80 (59)	250 (180)	1,000 (737)	1,500 (1,106)	1,300 (958)	3,100 (2,284)	5,500 (4,053)	7,600 (5,601)
	 Nm (ft. lbs.)	156 (115)	392 (290)	1,900 (1,400)	4,700 (3,464)	1,500 (1,105)	5,300 (3,906)	7,800 (5,748)	17,000 (12,529)

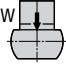
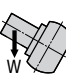
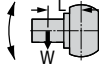
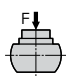
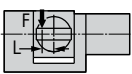
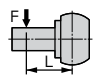
\* Other motors & RPM available

\*\* Booster optional

Dimensions = mm

Specifications subject to change without notice

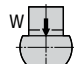

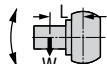
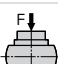
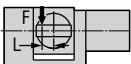
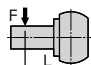
## TWA-Series Rotary Tables

Model		TWA-130		TWA-160		TWA-200		TN-320	
Tilt Range		-17° ~ +107°		-30° ~ +110°		-30° ~ +110°		-30° ~ +110°	
Spindle outer diameter		90h7		100h7		120h7		-	
Table diameter (optional)		(135)		160 (200)		200 (250)		320	
Table height at 0° position		210 (235 w/faceplate)		235 (260 w/faceplate)		270 (300 w/faceplate)		355	
Center height at 90° position		150		180		210		255	
Center bore	Nose Diameter (w/face plate)	55H7 (40H7)		55H7 (50H7)		65H7 (60H7)		105H7	
	Thru Diameter	35		40		45		100	
Table T-slot width		12H8 (w/faceplate)		12H8 (w/faceplate)		12H8 (w/faceplate)		14H7	
Guide block width		14h7		18h7		18h7		18h7	
Servo motor (Fanuc)*		Rotary	Tilt	Rotary	Tilt	Rotary	Tilt	Rotary	Tilt
		Alpha 2i	Alpha 2i	Alpha 2i	Alpha 2i	Alpha 4i	Alpha 4i	Alpha 8i	Alpha 8i
Maximum motor speed	rpm	5,000	5,000	5,000	5,000	5,000	5,000	4,000	4,000
Speed reduction ratio		1/60	1/120	1/72	1/120	1/45	1/90	1/120	1/240
Maximum table speed	rpm	83.3	41.7	69.4	41.7	111.1	55.5	33.3	16.6
Inertia converted into motor shaft	x 10 <sup>-3</sup> kg.m <sup>2</sup>	.074	.072	.17	.18	.38	.45	.82	.45
Clamp system		Pneumatic Dual Taper						Hydraulic @500 psi **	
Clamp torque @72psi	Nm (ft. lbs.)	500 (369)	500 (369)	500 (369)	800 (590)	800 (590)	1,000 (737)	[2,200] [(1,621)]	[2,200] [(1,621)]
Indexing accuracy		arc sec.	±20	-	±15	-	±15	-	±10
Tilting accuracy		arc sec.	-	±22.5	-	±22.5	-	±22.5	-
Net Weight		kg (lbs.)	76 (167)		127 (279)		190 (418)		440 (968)
Allowable wheel torque - rotary		Nm (ft. lbs.)	152 (112)		200 (147)		450 (332)		931 (686)
Allowable work inertia		kg.m <sup>2</sup>	.08		.19		.59		1.53
Allowable work weight	0° tilt angle 	kg (lbs)	35 (77)		60 (132)		120 (264)		150 (330)
	0° ~ 90° tilt angle 	kg (lbs)	20 (44)		40 (88)		70 (154)		100 (220)
Allowable work moment		Nm (ft. lbs.)	24 (17.7)		39.2 (28.9)		53.7 (39.6)		163.3 (120.4)
Allowable load when table clamped		N (lbf)	3,920 (878)		7,840 (1,756)		13,720 (3,073)		19,600 (4,390)
		Nm (ft. lbs.)	500 (369)		500 (369)		800 (590)		2,200 (1,621)
		Nm (ft. lbs.)	500 (369)		800 (590)		1,000 (737)		2,200 (1,621)

\* Other motors & RPM available • \*\* Booster optional • Dimensions = mm • Specifications subject to change without notice

# ROTARY TABLE SPECIFICATIONS

## TBS-Series & RTT-111, CA Rotary Tables

Model		TBS-130		TBS-160		RTT-111, CA	
Tilt Range		-30° ~ +110°		-30° ~ +110°		-17° ~ +107°	
Spindle outer diameter		90h7		100h7			
Table diameter (optional)		(135)		(160 or 200)			
Table height at 0° position		225 (250 w/faceplate)		270 (300 w/faceplate)		190	
Center height at 90° position		160		200		190	
Center bore	Nose Diameter (w/face plate)	55H7 (40H7)		55H7 (50H7)		--	
	Thru Diameter	40		40		--	
Table T-slot width		12H8		12H8		--	
Guide block width		14h7		18h7		14H7	
Servo motor (Fanuc)*		Rotary	Tilt	Rotary	Tilt	Rotary	Tilt
		Alpha 2i	Alpha 2i	Alpha 2i	Alpha 4i	Alpha 2i	Alpha 2i
Maximum motor speed	rpm	5,000	5,000	5,000	5,000	5,000	5,000
Speed reduction ratio		1/48	1/60	1/60	1/60	1/60	1/120
Maximum table speed	rpm	104.2	83.3	83.3	83.3	83.3	41.7
Inertia converted into motor shaft	$\times 10^{-3}\text{kg}\cdot\text{m}^2$	.074	.072	.17	.18	.074	.072
Clamp system		Pneumatic				Pneumatic Dual Taper	
Clamp torque @72psi	Nm (ft. lbs.)	700 (516)	700 (516)	700 (516)	700 (516)	500 (369)	500 (369)
Indexing accuracy	arc sec.	±10	-	±10	-	±20	-
Tilting accuracy	arc sec.	-	±17.5	-	±17.5	-	±30
Net Weight	kg (lbs.)	125 (276)		160 (353)		98(216)	
Allowable wheel torque - rotary	Nm (ft. lbs.)	-		-		152(112)	
Allowable work inertia	kg·m <sup>2</sup>	.08		.19		.08	
Allowable work weight	0° tilt angle 	kg (lbs)	35 (77)	60 (132)	35 (77)		
	0° ~ 90° tilt angle 	kg (lbs)	20 (44)	40 (88)	20 (44)		
Allowable work moment	 Nm (ft. lbs.)	61.1	59.6	57 (42)			
Allowable load when table clamped	 N (lbf)	3,920 (878)	10,800	3,920 (878)			
	 Nm (ft. lbs.)	700 (516)	700 (516)	500 (369)			
	 Nm (ft. lbs.)	700 (516)	700 (516)	500 (369)			

\* Other motors & RPM available • Dimensions = mm • Specifications subject to change without notice

# UNLOCK YOUR POTENTIAL TODAY!

For Over 40 years Koma Precision Inc. has partnered with Tsudakoma and Alberti, to become the North American leader in machine tool accessories. Both Tsudakoma and Alberti machine tool accessories are built to the highest standards and set the bar for excellence, quality, and performance.

Koma Precision has an installation base of over 30,000 Tsudakoma rotary tables and 25,000 Alberti angle heads and live tools, leading the way with knowledge and experience.

## Knowledge and Experience Matter.

Our three facilities totaling 40,000 sq/ft, feature a full machine shop, state-of-the-art inspection and test equipment, and product demonstration showroom. Our Connecticut based headquarters also houses our multi-million-dollar inventory of new products and spare parts.



20 Thompson Road  
East Windsor, CT 06088

Tel: 1.800.249.5662  
Fax: 860.623.4132  
info@komaprecision.com



**KOMA PRECISION**  
[www.komaprecision.com](http://www.komaprecision.com)

