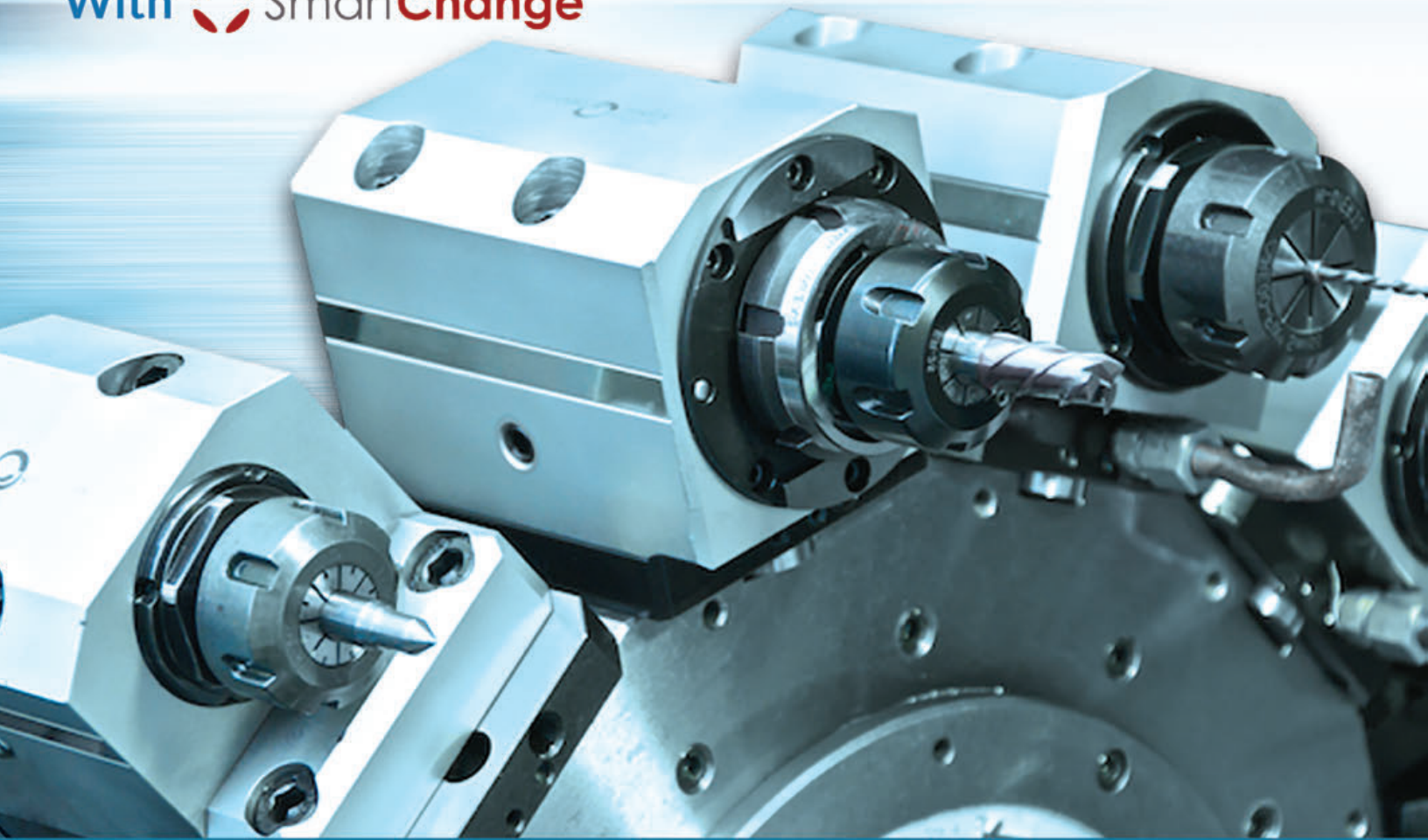




# KOMMA

 **Alberti**  
**LIVE TOOLS**  
With  **SmartChange**



Nakamura-Tome



## KOMA PRECISION

For over thirty years Koma Precision has been the foremost source for the finest the world has to offer in machine tool Productivity Innovation.

With over 30,000 rotary table installations, Koma is the largest distributor of Tsudakoma NC rotary tables and indexers in the world. With over 12,000 angle heads and live tools installed, Koma is the world's largest supplier for Alberti - the originator and the foremost innovator of productivity tooling.





# SMART CHANGE SYSTEM

## SMART CHANGE SYSTEM

New from Alberti, a complete range of live tools with interchangeable adapters for Okuma are now available in stock. The **SmartChange** System units have a standard profile with **no additional projection** to reduce the chance of interference with the machine's enclosures. Alberti's patent pending design creates **three points of contact** between the driven tool holder body and tool holder output surfaces so there is no compromise in concentricity and rigidity to gain the speed and convenience of quick-change tooling. With the **SmartChange** System one set of live tools can always stay in the machine with only the adapters needing to be changed. This provides **improved efficiency and flexibility**, plus a reduction in overall tooling costs.

## QUICK, EASY & PRECISE

Triple Contact System	Low Profile	How It Works
<p>First &amp; Second Contact Points Third Contact Point</p> <p>This system incorporates a triple contact support between the body and adapter for extreme rigidity and accuracy.</p>	<p>Turret HSK SmartChange</p>	<p>60° Clamping Un-Clamping</p>

The patent pending Alberti **SmartChange** collet clamp & wrench system quickly and precisely locks the quick change adapter, reducing tool cutter changing time to a minimum.

## HIGHEST ACCURACY & REPEATABILITY

Run-Out of the Collet Chuck with Adapter Mounted Repeatability	0.006 $\mu$ m
Adapter Change Time	20 seconds
Repeatability	0.003mm (0.0001 in.)

Run Out with **SmartChange** System

Accuracy with Gauge Bar Inserted in the Collet Chuck

Accuracy with Gauge Bar Inserted in the Collet Chuck	at 40mm = 0.008mm (1.57in. = 0.0003in.)
	at 120mm = 0.01mm (4.72in. = 0.0004in.)

ER Collet Chuck      Weldon Output      Shell Mill Output



## COMPATIBLE WITH YOUR

**WT-100 | WY-100 | SUPER NTY3 | NTJ-100 | NTMX**



## CROSS DRILL TOOLS

Tool	Tool Type	GH Number	Output	Torque	RPM	
C26330-SC	Standard	GH-66586-00	SC2*	-	8,000	
C26330C-SC	Coolant Thru	GH-66635-00	SC2*	-	8,000	



## FACE DRILL TOOLS

Tool	Tool Type	GH Number	Output	Torque	RPM	
C26333-SC	Standard	GH-66587-00	SC2*	25.1	8,000	
C26333C-SC	Coolant Thru	GH-66637-00	SC2*	25.1	8,000	
A26333-SC	Extended Length	GH-66980-00	SC2*	25.1	8,000	

Coolant Pressure = 70 Bar/1050 PSI • RPM = Maximum • Torque = Nm

\*SC2 Adapter not included. Output must be purchased separately.

\*Each tool comes standard with an ER SmartChange Adapter, a Main Spindle Anti-Rotation Wrench & a Long Handle Wrench for Lock / Unlock Nut. For additional adapters & accessories, see below.



# SMART CHANGE SYSTEM

## COMPATIBLE WITH YOUR

AS-200 | NTY3-150 | NTY3-250 | TW-10 | SC-150 | SC-200 | SC-250  
WY-150 | WY-250 | WT-150 | WT-150LB | WT-250 | WT-250II  
WTS-150 | WTW-150 | SUPER NTJ | SUPER NTJX | NTM3 | WY-250L



## CROSS DRILL TOOLS

Tool	Tool Type	GH Number	Output	Torque	RPM	
KZ-1510	Standard	GH-41510-13	SC2*	-	6,000	
KZ-1510 C	Coolant Thru	GH-41510-14	SC2*	-	6,000	

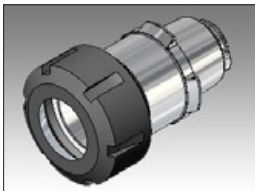


## FACE DRILL TOOLS

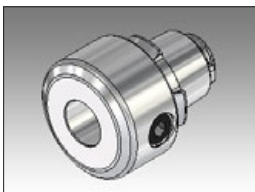
Tool	Tool Type	GH Number	Output	Torque	RPM	
KZ-1513	Standard	GH-41513-20	SC2*	25.1	6,000	
KZ-1513C	Coolant Thru	GH-41513-22	SC2*	25.1	6,000	

Coolant Pressure = 70 Bar/1050 PSI • RPM = Maximum • Torque = Nm

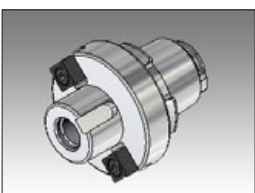
## ADDITIONAL ADAPTERS



ER COLLETS	
Size	
ER-20	SC2-ER20
ER-25	SC2-ER25
ER-32	SC2-ER32



WELDON OUTPUTS	
Size	
1/4"	SC2-.250
3/8"	SC2-.375
1/2"	SC2-.500
5/8"	SC2-.625



SHELL MILL ARBORS	
Size	
3/4"	SC2-SM.750

## MEASURING FIXTURES



SMART CHANGE TOOL POT	
Size	
40 Taper	GP-56661-00
50 Taper	GP-56548-00



HOLDING FIXTURE	
GP-56968-00	

Note: Holding fixture does not include adapter and wrench.



Alberti-Nakamura Live SC 19.0np 1/8/19



Tel: 1.800.249.5662  
Fax: 860.623.4132

info@komaprecision.com  
www.komaprecision.com

20 Thompson Road  
East Windsor, CT 06088

