



**KOMA PRECISION**  
THE KEY TO PERFORMANCE  
[www.komaprecision.com](http://www.komaprecision.com)



# SWISS TOOLS

## Selection Guide

### 2022

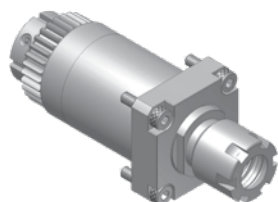


**WE FOCUS ON BEING THE BEST –**  
that's why leading companies choose Koma.

WE ARE THE EXCLUSIVE NORTH AMERICAN  
IMPORTER, NATIONAL DISTRIBUTOR, AND  
SERVICE CENTER FOR INBIS SWISS TOOLS.

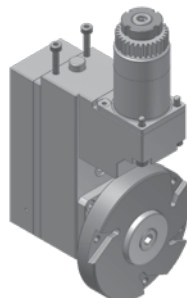


## JSL20RB/JSL20RBY TOOLING FOR GANG TOOL POST (SHANK : Ø34mm)



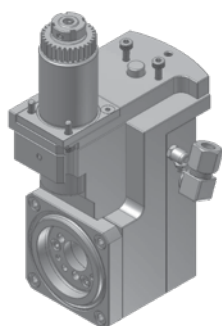
**STR161000**  
Cross drilling/milling unit

RATIO 1 : 1  
RPM(MAX) 8000  
TOOL CLAMPING ER16M



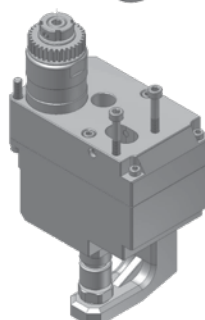
**JSR150100**  
Polygon unit

RATIO 1 : 1  
RPM(MAX) 3000  
CUTTER OD(MAX) Ø95mm



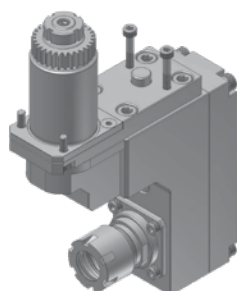
**JSR260100**  
Thread whirling unit

RATIO 1 : 1  
RPM(MAX) 6000  
THREAD(MAX) M12  
HELIX ANGLE ±15°



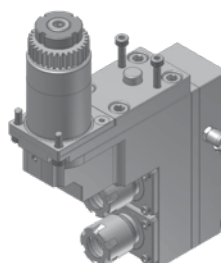
**JSR301000**  
Slotting unit

RATIO 1 : 0.374  
RPM(MAX) 4000  
SAW OD(MAX) Ø70mm  
SAW ARBOR SHANK Ø12.7mm



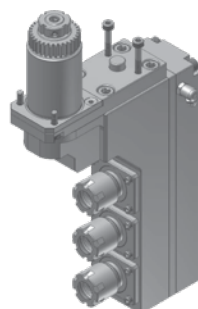
**JSR442100**  
1 spindle drilling/milling unit

RATIO 1 : 1  
RPM(MAX) 6000  
TOOL CLAMPING ER20M



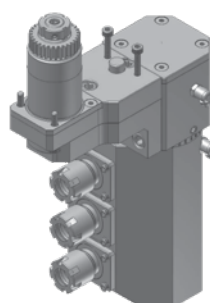
**JSR446200**  
2 spindle drilling/milling unit

RATIO 1 : 1  
RPM(MAX) 6000  
TOOL CLAMPING ER16M



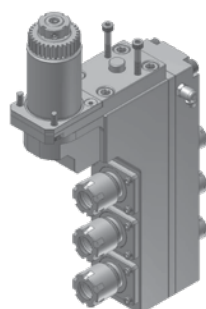
**JSR446300-1**  
3 spindle drilling/milling unit

RATIO 1 : 1  
RPM(MAX) 6000  
TOOL CLAMPING ER16M



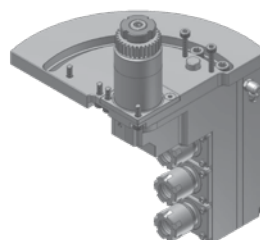
**JSR496300-2**  
3 spindle drilling/milling unit

RATIO 1 : 1  
RPM(MAX) 6000  
TOOL CLAMPING ER16M  
ANGLE ADJUSTMENT ±180°



**JSR546300-1**  
3 spindle drilling/milling unit

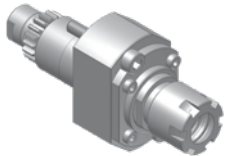
RATIO 1 : 1  
RPM(MAX) 6000  
TOOL CLAMPING  
Front side : ER16M  
Back side : ER11M



**JSR596300-1**  
3 spindle drilling/milling unit

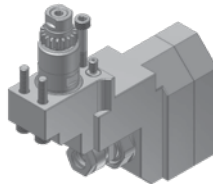
RATIO 1 : 1  
RPM(MAX) 6000  
TOOL CLAMPING  
Front side : ER16M  
Back side : ER11M  
ANGLE ADJUSTMENT 0~90°

## JSL20RB/JSL20RBY TOOLING FOR BACK TOOL POST (SHANK Ø22mm)



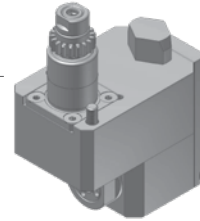
**JSL761000**  
Drilling/milling unit

RATIO 1 : 1  
RPM(MAX) 6000  
TOOL CLAMPING ER16M



**JSR731100**  
Slotting unit

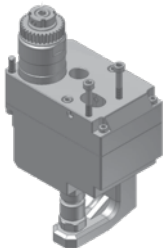
RATIO 1 : 0.55  
RPM(MAX) 4000  
TOOL CLAMPING ER11A  
CENTER ADJUSTMENT ±1mm



**JSR861100**  
Cross drilling/milling unit

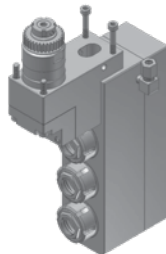
RATIO 1 : 1  
RPM(MAX) 6000  
TOOL CLAMPING ER11

## JSL26AB/JSL32AB/JSL42AB TOOLING FOR GANG TOOL POST (SHANK : Ø36mm)



**JSL301000**  
Slotting unit

RATIO 1 : 0.36  
RPM(MAX) 3000  
SAW OD(MAX) Ø70mm  
SAW ARBOR SHANK Ø12.7mm



**JSL523000**  
3 spindle drilling/milling unit

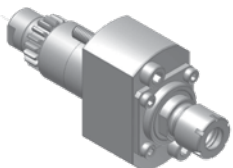
RATIO 1 : 1  
RPM(MAX) 6000  
TOOL CLAMPING  
Front side : ER20  
Back side : ER11M



**JSL806000**  
Thread whirling unit

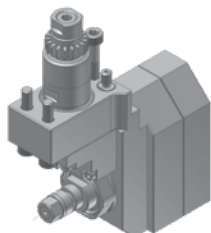
RATIO 1 : 1  
RPM(MAX) 6000  
THREAD(MAX) M12  
HELIX ANGLE ±15°

## TOOLING FOR BACK TOOL POST (SHANK Ø22mm)



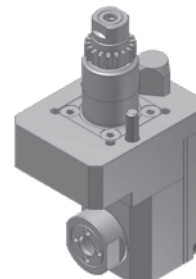
**STR711000**  
Drilling/milling unit

RATIO 1 : 1  
RPM(MAX) 6000  
TOOL CLAMPING ER11M  
STAR ITEM NO. 541-61



**STR731000**  
Slotting unit

RATIO 1 : 0.55  
RPM(MAX) 4000  
SAW OD(MAX) Ø50  
SAW ARBOR SHANK  
Ø5.0/6.0/8.0/12.7/13.0mm



**STR811000-10J/  
STR811000-20R**  
Cross drilling/milling unit

RATIO 1 : 1  
RPM(MAX) 6000  
TOOL CLAMPING ER11

# UNLOCK YOUR POTENTIAL TODAY!

For Over 40 years Koma Precision Inc. has partnered with Tsudakoma and Alberti, to become the North American leader in machine tool accessories. Both Tsudakoma and Alberti machine tool accessories are built to the highest standards and set the bar for excellence, quality, and performance.

Koma Precision has an installation base of over 30,000 Tsudakoma rotary tables and 25,000 Alberti angle heads and live tools, leading the way with knowledge and experience.

## Knowledge and Experience Matter.

Our three facilities totaling 40,000 sq/ft, feature a full machine shop, state-of-the-art inspection and test equipment, and product demonstration showroom. Our Connecticut based headquarters also houses our multi-million-dollar inventory of new products and spare parts.



20 Thompson Road  
East Windsor, CT 06088

Tel: 1.800.249.5662  
Fax: 860.623.4132  
[info@komaprecision.com](mailto:info@komaprecision.com)



**KOMA PRECISION**  
[www.komaprecision.com](http://www.komaprecision.com)

