

T90-1,5



Ratio
Rapporto / Verhältnis
1:1



RPM
Velocità / Drehzahl max.
8.000 min⁻¹



Max. axial load
Max. carico assiale / Max. Axialbe-
lastung
250 N



Torque
Momento torcente / Drehmo-
ment
15 Nm



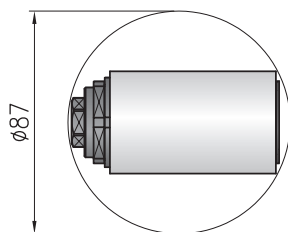
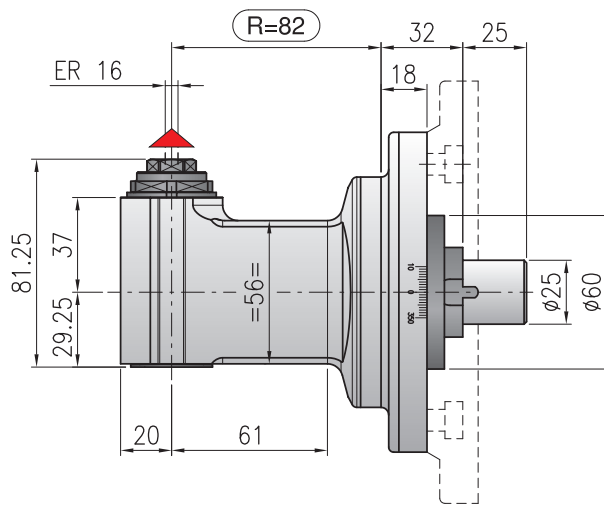
Weight
Peso / Gewicht
4,3 kg



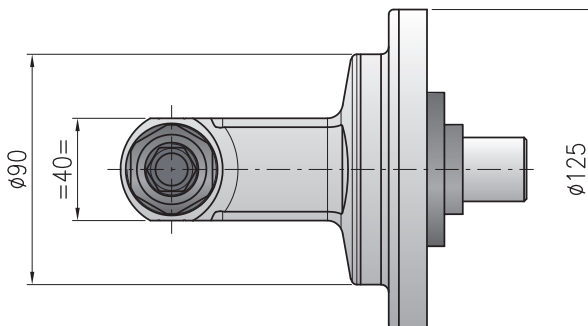
Collet
Pinza / Spannzange
ER-16 \varnothing 1/10 mm

*** STANDARD EQUIPMENT INCLUDES:**

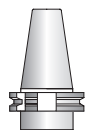
- Special bag - wrenches - Grease tube - Instruction book
- Bauletto - Ghiera ER chiavi di servizio - Tubetto di grasso - Libro istruzioni
- Spezialtasche - Schraubenschlüssel - Tube mit Fett - Bedienungsanleitung



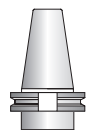
Minimum diameter without tool
Diametro minimo senza utensile
Durchmesser min. ohne



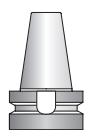
▲ Direction of rotation opposite to machine spindle / senso di rotazione contrario al mandrino / Drehrichtung entgegeng Antriebsspin-



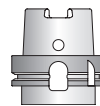
DIN-69871



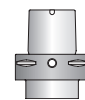
CAT



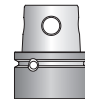
MAS-BT



HSK



CAPTO



KM

Shank/Cono/Aufnahme

Option / Opzione / Option



bar max
12

Coolant through spindle
Adduzione refrigerante interna
Kühlmittelzufuhr durch Spindel



min⁻¹
10.000

High speed optional RPM max.
Opzione alta velocità RPM max
Drehzahl max.



\varnothing mm
13

Arbor output
Porta fresa
Fräseraufnahme



\varnothing mm max.
10

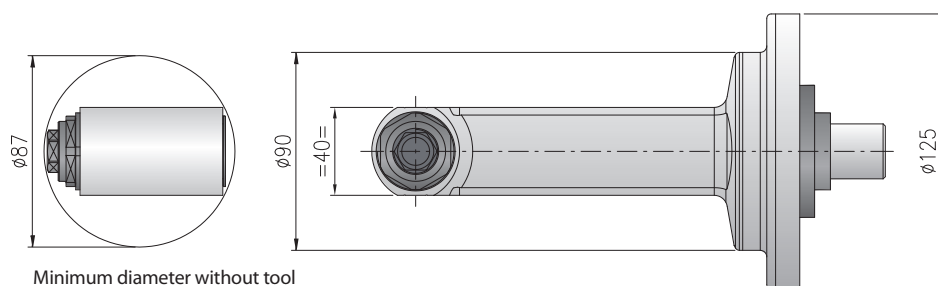
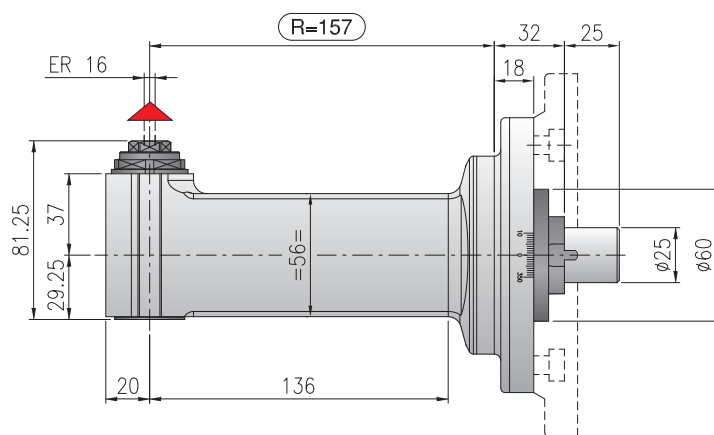
Weldon output
Weldon
Weldon-Aufnahme



ER-16/ER11

Double output
Doppia uscita
Doppelter Ausgang

T90-1,5L



Minimum diameter without tool
Diametro minimo senza utensile
Durchmesser min. ohne

- Ratio**
Rapporto / Verhältnis
1:1
- RPM**
Velocità / Drehzahl max.
8.000 min⁻¹
- Max. axial load**
Max. carico assiale / Max. Axialbe-
lastung
250 N
- Torque**
Momento torcente / Drehmo-
ment
15 Nm
- Weight**
Peso / Gewicht
5,2 kg
- Collet**
Pinza / Spannzange
ER-16 \varnothing 1/10 mm

*** STANDARD EQUIPMENT INCLUDES:**

- Special bag - wrenches - Grease tube - Instruction book
- Bauletto - Ghiera ER chiavi di servizio - Tubetto di grasso - Libro istruzioni
- Spezialtasche - Schraubenschlüssel - Tube mit Fett - Bedienungsanleitung

Direction of rotation opposite to machine spindle / senso di rotazione contrario al mandrino / Drehrichtung entgegeng Antriebsspin-

| | | | | | | |
|---------------------|-----------|-----|--------|-----|-------|----|
| | | | | | | |
| Shank/Cono/Aufnahme | DIN-69871 | CAT | MAS-BT | HSK | CAPTO | KM |

Option / Opzione / Option

| | | | | |
|---|--|---|--|---|
| | | | | |
| bar max 12 | min ⁻¹ 10.000 | \varnothing mm 13 | \varnothing mm max. 10 | ER-16/ER11 |
| Coolant through spindle Adduzione refrigerante interna Kühlmittelzufuhr durch Spindel | High speed optional RPM max. Opzione alta velocità RPM max Drehzahl max. | Arbor output Porta fresa Fräseraufnahme | Weldon output Weldon Weldon-Aufnahme | Double output Doppia uscita Doppelter Ausgang |

